

LM10502, LM10602, LM10604 Dual Buck + LDO Power Management Unit

Check for Samples: [LM10502](#), [LM10602](#), [LM10604](#)

FEATURES

- Three Highly Efficient Programmable Buck Regulators
 - Integrated FETs with Low $R_{DS(on)}$
 - Bucks Operate with Their Phases Shifted to Reduce the Input Current Ripple and Capacitor Size
 - Programmable Output Voltage via the SPI interface
 - Overvoltage and Undervoltage Lockout
 - Automatic Internal Soft Start with Power-on Reset
 - Current Overload and Thermal Shutdown Protection
 - PFM Mode for Low-Load, High-Efficiency Operation
- Low-Dropout LDO 3.0V, 250 mA
- SPI-Programmable Interrupt Comparator (2.0V to 4.0V) to Monitor VIN

APPLICATIONS

- Solid-State Drives

KEY SPECIFICATIONS

- LM10502 - Programmable Buck Regulators:
 - Buck 1: 1.1V to 3.6V; 1A
 - Buck 2: 0.7V to 1.335V; 1A
- LM10602 - Programmable Buck Regulators:
 - Buck 1: 1.1V to 3.6V; 400mA
 - Buck 2: 0.7V to 1.335V; 600mA
- LM10604 - Programmable Buck Regulators:
 - Buck 1: 1.1V to 3.6V; 1.5A
 - Buck 2: 0.7V to 1.335V; 1.35A
- $\pm 3\%$ Feedback Voltage Accuracy
- Up to 95% Efficient Buck Regulators
- 2MHz Switching Frequency for Smaller Inductor Size
- 2.5 x 2.5 mm, 0.5 mm Pitch DSBGA Package

DESCRIPTION

The LM10502, LM10602, LM10604 are advanced PMUs each containing three configurable, high-efficiency buck regulators for supplying variable voltages. The device is ideal for supporting ASIC and SOC designs for Solid-State and Flash drives.

The LM10502, LM10602, LM10604 operate cooperatively with the application ASIC to optimize the supply voltage for low-power conditions and Power Saving modes via the SPI interface. It also supports a 250 mA LDO and a programmable Interrupt Comparator to monitor VIN.

PRODUCT PREVIEW

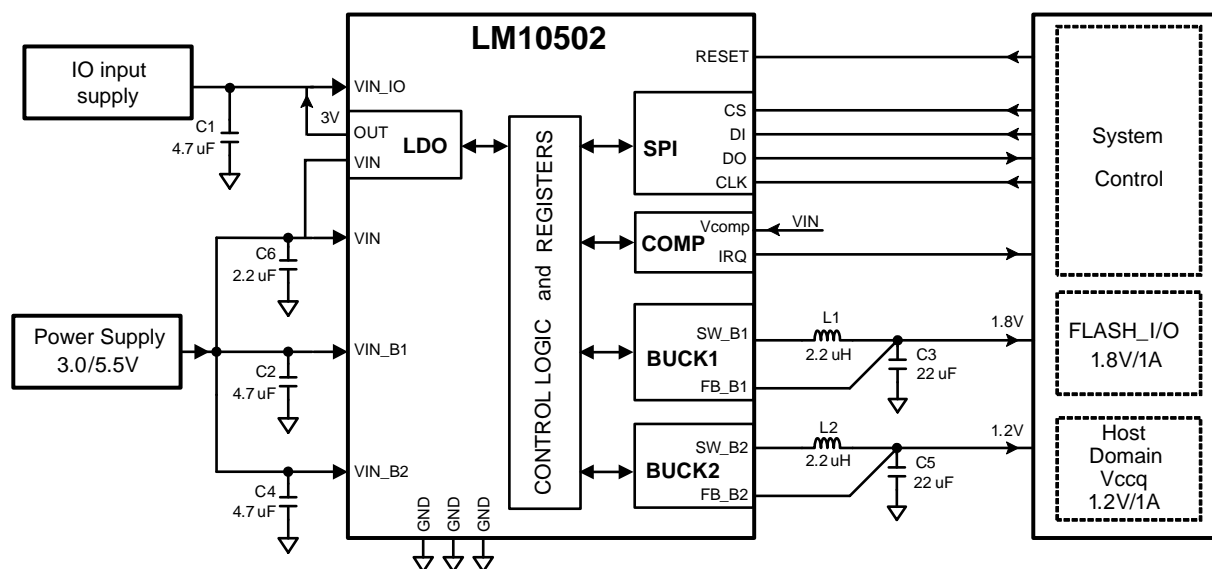

Please be aware that an important notice concerning availability, standard warranty, and use in critical applications of Texas Instruments semiconductor products and disclaimers thereto appears at the end of this data sheet.

All trademarks are the property of their respective owners.

PRODUCT PREVIEW information concerns products in the formative or design phase of development. Characteristic data and other specifications are design goals. Texas Instruments reserves the right to change or discontinue these products without notice.

Copyright © 2012, Texas Instruments Incorporated

Figure 1. Typical Application Diagram



PRODUCT PREVIEW

Overview

The LM10502, LM10602, LM10604 each contain two buck converters and one LDO. The table below (Table 1) list the output characteristics of the power regulators.

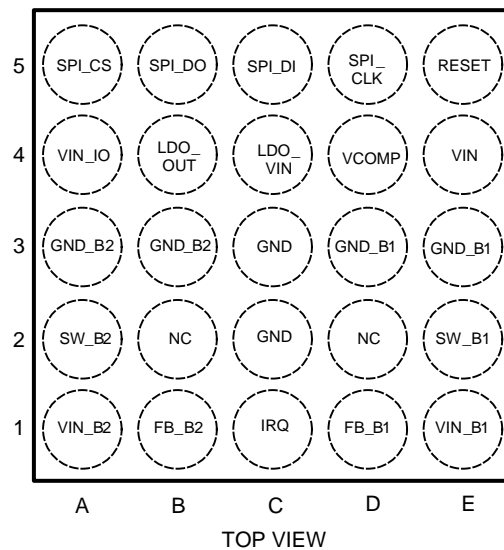
SUPPLY SPECIFICATION

Table 1. Output Voltage Configurations for LM10502, LM10602, LM10604

Regulator	Start-Up	V _{OUT}	Maximum Output Current I _{out-max}	Typical Application	Comments
Buck 1 ⁽¹⁾	1.8V	1.1V to 3.6V; 50 mV steps	LM10502 - 1A	V _{CCQ}	Flash
			LM10602 - 400mA		
			LM10604 - 1.5A		
Buck 2 ⁽¹⁾	1.2V	0.7V to 1.335V; 5 mV steps	LM10502 - 1A	V _{Core}	Interface
			LM10602 - 600mA		
			LM10604 - 1.35A		
LDO	3.0V	3.0V	250 mA	V _{HOST} controller	Can be used to provide V _{VIN_IO}

(1) Default voltage values are determined when working in PWM mode. Voltage may be 0.8-1.6% higher when in PFM mode.

Connection Diagram and Package Marking



PIN DESCRIPTIONS

Pin #	Pin Name	I/O	Type	Functional Description
E1	VIN_B1	I	P	Buck Switcher Regulator 1 - Power supply voltage input for power stage PFET.
E2	SW_B1	O	P	Buck Switcher Regulator 1 - Power Switching node, connect to inductor
D1	FB_B1	I	A	Buck Switcher Regulator 1 - Voltage output feedback for Buck Regulator 1
D3/E3	GND_B1	G	P	Buck Switcher Regulator 1 - Power ground for Buck Regulator
A1	VIN_B2	I	P	Buck Switcher Regulator 2 - Power supply voltage input for power stage PFET.
A2	SW_B2	O	P	Buck Switcher Regulator 2 - Power Switching node, connect to inductor
B1	FB_B2	I	A	Buck Switcher Regulator 2 - Voltage output feedback for Buck Regulator 2
A3/B3	GND_B2	G	P	Buck Switcher Regulator 2 - Power ground for Buck Regulator
E4	VIN	I	P	Power supply Input Voltage, must be present for device to work
C4	LDO_VIN	I	P	LDO Regulator - LDO input voltage can be only come from bump D4/E4 -VIN or if not used has to be connected to C3-GND
B4	LDO_OUT	O	P	LDO Regulator - LDO output voltage can only be connected to bump A4 to provide VIN_IO or is not used

PIN DESCRIPTIONS (continued)

A4	VIN_IO	P	A	Supply Voltage for Digital Interface can be supplied from any external supply or bump B4 - LDO_OUT
A5	SPI_CS	I	D	SPI Interface – chip select
C5	SPI_DI	I	D	SPI Interface – serial data input
B5	SPI_DO	O	D	SPI Interface – serial data output
D5	SPI_CLK	I	D	SPI Interface – serial clock input
E5	RESET	I	D	Digital Input Control Signal to abort SPI transactions and resets the PMIC to default Voltages
D4	VCOMP	I	A	Analog Input for Comparator. Can only be connected to monitor E4-VIN
C1	IRQ	O	D	Digital Output of Comparator to signal Interrupt condition from Comparator input VIN
C3	GND	G	G	Ground. Connect to system Ground.
C2	GND	G	G	Ground. Connect to system Ground.
B2	NC			Do not connect
D2	NC			Do not connect

Absolute Maximum Ratings⁽¹⁾⁽²⁾

VIN, VCOMP	–0.3V to +6.0V
VIN_IO, VIN_B1, VIN_B2, SPI_CS, SPI_DI, SPI_CLK, SPI_DO, RESET, IRQ	–0.3V to V _{VIN}
Junction Temperature (T _{J-MAX})	150°C
Storage Temperature	–65°C to 150°C
ESD Rating	Human Body Model (HBM) 2.0kV

- (1) Absolute Maximum Ratings are limits beyond which damage to the device may occur. Operating Ratings are conditions under which operation of the device is guaranteed. Operating Ratings do not imply guaranteed performance limits. For guaranteed performance limits and associated test conditions, see the [General Electrical Characteristics](#).
- (2) If Military/Aerospace specified devices are required, please contact the TI Sales Office/Distributors for availability and specifications.

Operating Ratings⁽¹⁾⁽²⁾⁽³⁾

VIN_B1, VIN_B2, VIN_B3, VIN	3.0V to 5.5V
VIN_IO	1.72V to 3.63V and < V _{VIN}
All pins except VIN_IO	0V to V _{VIN}
Junction Temperature (T _J)	–30°C to 125°C
Ambient Temperature (T _A)	–30°C to 85°C
Junction-to-Ambient Thermal Resistance (θ _{JA}) ⁽¹⁾	42.1°C/W
Maximum Continuous Power Dissipation (P _{D-MAX}) ⁽¹⁾	0.95W

- (1) In applications where high power dissipation and/or poor thermal resistance is present the maximum ambient temperature may have to be derated. Maximum ambient temperature (T_{A-MAX}) is dependent on the maximum operating junction temperature (T_{J-MAX-OP} = +125°C), the maximum power dissipation of the device in the application (P_{D-MAX}), and the junction-to-ambient thermal resistance of the part/package in the application (θ_{JA}), as given by the following equation: T_{A-MAX} = T_{J-MAX-OP} – (θ_{JA} × P_{D-MAX}).
- (2) The amount of Absolute Maximum power dissipation allowed for the device depends on the ambient temperature and can be calculated using the formula: P = (T_J – T_A) / θ_{JA}, where T_J is the junction temperature, T_A is the ambient temperature, and θ_{JA} is the junction-to-ambient thermal resistance. θ_{JA} is highly application and board-layout dependent. Internal thermal shutdown circuitry protects the device from permanent damage. (See [General Electrical Characteristics](#).)
- (3) Internal thermal shutdown protects device from permanent damage. Thermal shutdown engages at T_J = +140°C and disengages at T_J = +120°C (typ.). Thermal shutdown is guaranteed by design.

General Electrical Characteristics⁽¹⁾⁽²⁾

Unless otherwise noted, $V_{VIN} = 5.0V$, $V_{VIN_IO} = 3.0V$.

The application circuit used is the one shown in "Typical Application Circuit."

Limits in standard typeface are for $T_J = 25^\circ C$.

Limits appearing in **boldface** type apply over the entire operating junction temperature range of $-30^\circ C \leq T_A = T_J \leq +85^\circ C$.

Symbol	Parameter	Conditions	Min	Typ	Max	Units
I _Q	Quiescent Supply Current	BUCK1 OFF, BUCK2 PFM no load,LDO SLEEP		60	130	μA
UNDER/OVERVOLTAGE LOCK OUT						
V _{UVLO_RISING}	Under Voltage Lock Out		2.75	2.9	3.05	V
V _{UVLO_FALLING}			2.45	2.6	2.75	
V _{OVLO_RISING}	Over Voltage Lock Out			5.7		
V _{OVLO_FALLING}				5.6		
DIGITAL INTERFACE						
V _{VIN_IO}	Input Supply for digital interface	V _{VIN_IO} ≤ V _{VIN}	1.72		3.63	V
V _{IL}	Logic input low	SPI_CS, SPI_DI, SPI_CLK, RESET,			0.3*V _{VIN_IO}	
V _{IH}	Logic input high		0.7*V _{VIV_IO}			
V _{OL}	Logic output low	SPI_DO			0.2*V _{VIN_IO}	
V _{OH}	Logic output high		0.8*V _{VIN_IO}			
I _{IL}	Input current, pin driven low	SPI_CS, SPI_DI, SPI_CLK,	-2			μA
		RESET	-5			
I _{IH}	Input current, pin driven high	SPI_CS, SPI_DI, SPI_CLK, RESET			2	μA
f _{SPI_MAX}	SPI max frequency				10	MHz
t _{RESET}	Minimum high-pulse width ⁽³⁾			2		μsec

(1) All limits are guaranteed by design, test and/or statistical analysis. All electrical characteristics having room-temperature limits are tested during production with $T_J = 25^\circ C$. All hot and cold limits are guaranteed by correlating the electrical characteristics to process and temperature variations and applying statistical process control.

(2) Capacitors: Low-ESR Surface-Mount Ceramic Capacitors (MLCCs) are used in setting electrical characteristics.

(3) Specification guaranteed by design. Not tested during production.

Buck 1 Electrical Characteristics⁽¹⁾⁽²⁾⁽³⁾

Unless otherwise noted, $V_{IN} = 5.0V$ where: $V_{IN} = V_{VIN_B1} = V_{VIN_B2}$, $L1 = 2.2\mu H$, $C3 = C5 = 22\mu F$, $C2 = C4 = 4.7\mu F$.

The application circuit used is the one shown in "Typical Application Circuit."

Limits in standard typeface are for $T_J = 25^\circ C$.

Limits appearing in **boldface** type apply over the entire operating junction temperature range of $-30^\circ C \leq T_A = T_J \leq +85^\circ C$.

Symbol	Parameter	Conditions		Min	Typ	Max	Units
I _Q	DC Bias Current in V _{IN}	No Load, PFM Mode			15	50	μA
I _{OUT-MAX}	Continuous load current ^{(4)(5) (6)(7)}	Buck 1 enabled switching in PWM		1.0			
I _{PEAK}	Peak switching current limit	Buck 1 enabled, switching in PWM	LM10502	1.3	1.575	1.85	A
			LM10602	0.65	1.2	1.55	
			LM10604	1.85	2.1	TBD	
η	Efficiency peak, Buck 1 ⁽⁵⁾	I _{OUT} = 0.3A, V _{IN} = 5.0V			90		%
F _{SW}	Switching Frequency			1.75	2	2.3	MHz
C _{IN}	Input Capacitor ⁽⁵⁾	0mA ≤ I _{OUT} ≤ -I _{OUT-MAX}			4.7		μF
C _{OUT}	Output Filter Capacitor ⁽⁵⁾			10	LM10502 - 22	100	
					LM10602 - 22		
					LM10604 - 22+47		
	Output Capacitor ESR ⁽⁵⁾					20	mΩ
L	Output Filter Inductance ⁽⁵⁾				2.2		μH
V _{FB}	Feedback Voltage	V _{OUT} = 1.8V (Default) PWM Mode,No Load		-3		3	%
ΔV _{OUT}	DC Line regulation ⁽⁵⁾	3.3V ≤ V _{IN} ≤ 5.0V, I _{OUT-MAX}			0.5		%/V
	DC Load regulation ⁽⁵⁾	100mA ≤ I _{OUT-MAX}			0.3		%/A
I _{FB}	Feedback pin input bias current	V _{FB} = 1.8V			2.4	5	μA
R _{DS-ON-HS}	High Side Switch On Resistance	V _{IN} = 5.0V			140		mΩ
		V _{IN} = 2.6V			220		
R _{DS-ON-LS}	Low Side Switch On Resistance	V _{IN} = 5.0V			70	150	mΩ
STARTUP							
T _{START}	Internal soft-start (turn on time) ⁽⁵⁾	Startup from shutdown, V _{OUT} = 0V, no load, LC = recommended circuit, using software enable, to V _{OUT} = 95% of final value			0.1		ms

- (1) All limits are guaranteed by design, test and/or statistical analysis. All electrical characteristics having room-temperature limits are tested during production with $T_J = 25^\circ C$. All hot and cold limits are guaranteed by correlating the electrical characteristics to process and temperature variations and applying statistical process control.
- (2) Capacitors: Low-ESR Surface-Mount Ceramic Capacitors (MLCCs) are used in setting electrical characteristics.
- (3) BUCK normal operation is guaranteed if $V_{IN} \geq V_{OUT} + 1.0V$.
- (4) Absolute Maximum Ratings are limits beyond which damage to the device may occur. Operating Ratings are conditions under which operation of the device is guaranteed. Operating Ratings do not imply guaranteed performance limits. For guaranteed performance limits and associated test conditions, see the [General Electrical Characteristics](#).
- (5) Specification guaranteed by design. Not tested during production.
- (6) In applications where high power dissipation and/or poor thermal resistance is present the maximum ambient temperature may have to be derated. Maximum ambient temperature (T_{A-MAX}) is dependent on the maximum operating junction temperature ($T_{J-MAX-OP} = +125^\circ C$), the maximum power dissipation of the device in the application (P_{D-MAX}), and the junction-to-ambient thermal resistance of the part/package in the application (θ_{JA}), as given by the following equation: $T_{A-MAX} = T_{J-MAX-OP} - (\theta_{JA} \times P_{D-MAX})$.
- (7) The amount of Absolute Maximum power dissipation allowed for the device depends on the ambient temperature and can be calculated using the formula: $P = (T_J - T_A) / \theta_{JA}$, where T_J is the junction temperature, T_A is the ambient temperature, and θ_{JA} is the junction-to-ambient thermal resistance. θ_{JA} is highly application and board-layout dependent. Internal thermal shutdown circuitry protects the device from permanent damage. (See [General Electrical Characteristics](#).)

Buck 2 Electrical Characteristics⁽¹⁾⁽²⁾⁽³⁾

Unless otherwise noted, $V_{IN} = 5.0V$ where: $V_{IN} = V_{VIN_B1} = V_{VIN_B2}$. $L1 = 2.2\mu H$, $C3 = C5 = 22\mu F$, $C2 = C4 = 4.7\mu F$.

The application circuit used is the one shown in "Typical Application Circuit."

Limits in standard typeface are for $T_J = 25^\circ C$.

Limits appearing in **boldface** type apply over the entire operating junction temperature range of $-30^\circ C \leq T_A = T_J \leq +85^\circ C$.

Symbol	Parameter	Conditions		Min	Typ	Max	Units
I _Q	DC Bias Current in V _{IN}	No Load, PFM Mode			15	50	μA
I _{OUT-MAX}	Continuous load current ⁽⁴⁾ (5) (6) (7)	Buck 1 enabled switching in PWM		1.0			
I _{PEAK}	Peak switching current limit	Buck 1 enabled, switching in PWM	LM10502	1.3	1.575	1.85	A
			LM10602	0.9	1.3	1.7	
			LM10604	1.675	1.9	TBD	
η	Efficiency peak, Buck 2 ⁽⁵⁾	I _{OUT} = 0.3A, V _{IN} = 5.0V			90		%
F _{SW}	Switching Frequency			1.75	2	2.3	MHz
C _{IN}	Input Capacitor ⁽⁵⁾	0mA ≤ I _{OUT} ≤ -I _{OUT-MAX}			4.7		μF
C _{OUT}	Output Filter Capacitor ⁽⁵⁾			10	LM10502 - 22	100	
					LM10602 - 22		
					LM10604 - 22 + 47		
	Output Capacitor ESR ⁽⁵⁾					20	mΩ
L	Output Filter Inductance ⁽⁵⁾				2.2		μH
V _{FB}	Feedback Voltage	V _{OUT} = 1.2V (Default) PWM Mode, No Load		-3		3	%
ΔV _{OUT}	DC Line regulation ⁽⁵⁾	3.3V ≤ V _{IN} ≤ 5.0V, I _{OUT} = I _{OUT-MAX}			0.5		%/V
	DC Load regulation ⁽⁵⁾	100 mA ≤ I _{OUT} ≤ I _{OUT-MAX}			0.3		%/A
I _{FB}	Feedback pin input bias current	V _{FB} = 1.2V			1.6	4	μA
R _{DS-ON-HS}	High Side Switch On Resistance	V _{IN} = 5.0V			140		mΩ
		V _{IN} = 2.6V			220		
R _{DS-ON-LS}	Low Side Switch On Resistance	V _{IN} = 5.0V			70	150	
STARTUP							
T _{START}	Internal soft-start (turn on time) ⁽⁵⁾	Startup from shutdown, V _{OUT} = 0V, no load, LC = recommended circuit, using software enable, to V _{OUT} = 95% of final value			0.1		ms

- (1) All limits are guaranteed by design, test and/or statistical analysis. All electrical characteristics having room-temperature limits are tested during production with $T_J = 25^\circ C$. All hot and cold limits are guaranteed by correlating the electrical characteristics to process and temperature variations and applying statistical process control.
- (2) Capacitors: Low-ESR Surface-Mount Ceramic Capacitors (MLCCs) are used in setting electrical characteristics.
- (3) BUCK normal operation is guaranteed if $V_{IN} \geq V_{OUT} + 1.0V$.
- (4) Absolute Maximum Ratings are limits beyond which damage to the device may occur. Operating Ratings are conditions under which operation of the device is guaranteed. Operating Ratings do not imply guaranteed performance limits. For guaranteed performance limits and associated test conditions, see the [General Electrical Characteristics](#).
- (5) Specification guaranteed by design. Not tested during production.
- (6) In applications where high power dissipation and/or poor thermal resistance is present the maximum ambient temperature may have to be derated. Maximum ambient temperature (T_{A-MAX}) is dependent on the maximum operating junction temperature ($T_{J-MAX-OP} = +125^\circ C$), the maximum power dissipation of the device in the application (P_{D-MAX}), and the junction-to-ambient thermal resistance of the part/package in the application (θ_{JA}), as given by the following equation: $T_{A-MAX} = T_{J-MAX-OP} - (\theta_{JA} \times P_{D-MAX})$.
- (7) The amount of Absolute Maximum power dissipation allowed for the device depends on the ambient temperature and can be calculated using the formula: $P = (T_J - T_A) / \theta_{JA}$, where T_J is the junction temperature, T_A is the ambient temperature, and θ_{JA} is the junction-to-ambient thermal resistance. θ_{JA} is highly application and board-layout dependent. Internal thermal shutdown circuitry protects the device from permanent damage. (See [General Electrical Characteristics](#).)

LDO Electrical Characteristics⁽¹⁾⁽²⁾

Unless otherwise noted, $V_{IN} = 5.0V$ where: $V_{IN} = V_{VIN} = V_{VIN_LDO}$. $C1 = 4.7\mu F$, $C6 = 2.2\mu F$.

The application circuit used is the one shown in "Typical Application Circuit."

Limits in standard typeface are for $T_J = 25^\circ C$.

Limits appearing in **boldface** type apply over the entire operating junction temperature range of $-30^\circ C \leq T_A = T_J \leq +85^\circ C$.

Symbol	Parameter	Conditions	Min	Typ	Max	Units
V_{OUT}	Output Voltage Accuracy	$I_{OUT} = 1mA, V_{OUT} = 3V$	-3		+3	%
I_{OUT}	Maximum Output Current		250			mA
I_{SC}	Short Circuit Current Limit	$V_{OUT} = 0V^{(3)}$, $V_{IN} = 3.3V$		0.5 5		A
V_{DO}	Dropout Voltage ⁽⁴⁾	$I_{OUT} = 250mA$		175	240	mV
ΔV_{OUT}	Line Regulation	$3.3V \leq V_{IN} \leq 5.5V$, $I_{OUT} = 1mA$		5		
	Load Regulation	$1mA \leq I_{OUT} \leq 250mA$, $V_{IN} = 3.3V, 5.0V$		5		
e_N	Output Noise Voltage ⁽³⁾	$10Hz \leq f \leq 100kHz$	$V_{IN} = 5.0V$	10		μV_R
			$V_{IN} = 3.3V$	35		MS
PSRR	Power Supply Rejection Ratio ⁽³⁾	$F = 10kHz$, $I_{OUT} = 20mA$	$V_{IN} = 5.0V$	65		dB
			$V_{IN} = 3.3V$	40		
$t_{STARTUP}$	Startup Time from Shutdown ⁽³⁾	$I_{OUT} = 250mA$	$V_{IN} = 5.0V$	45		μs
			$V_{IN} = 3.3V$	60		
$T_{TRANSIENT}$	Startup Transient Overshoot ⁽³⁾	$I_{OUT} = 250mA$		30		mV

(1) All limits are guaranteed by design, test and/or statistical analysis. All electrical characteristics having room-temperature limits are tested during production with $T_J = 25^\circ C$. All hot and cold limits are guaranteed by correlating the electrical characteristics to process and temperature variations and applying statistical process control.

(2) Capacitors: Low-ESR Surface-Mount Ceramic Capacitors (MLCCs) are used in setting electrical characteristics.

(3) Specification guaranteed by design. Not tested during production.

(4) Dropout voltage is the difference between the input and output at which the output voltage drops to 100mV below its nominal value.

Comparators Electrical Characteristics⁽¹⁾⁽²⁾

Unless otherwise noted, $V_{IN} = 5.0V$ where: $V_{IN} = V_{VIN} = V_{VIN_LDO}$.

The application circuit used is the one shown in "Typical Application Circuit."

Limits in standard typeface are for $T_J = 25^\circ C$.

Limits appearing in **boldface** type apply over the entire operating junction temperature range of $-30^\circ C \leq T_A = T_J \leq +85^\circ C$.

Symbol	Parameter	Conditions	Min	Typ	Max	Units
I_{VCOMP}	VCOMP pin bias current	$V_{COMP} = 0.0V$	-2	0.1		μA
		$V_{COMP} = 5.0V$		0.1	2	
V_{VCOMP_RISE}	VCOMP input rising edge trigger level			2.826		V
V_{VCOMP_FALL}	VCOMP input falling edge trigger level			2.768		
Hysteresis			30	60	80	mV
VOH	IRQ Output voltage high	@2mA			$0.8 \cdot V_{IN_IO}$	V
VOL	IRQ Output voltage low	@2mA	$0.2 \cdot V_{IN_IO}$			
t_{COMP}	Transition time of Interrupt to IRQ pin output			6	15	μsec

(1) All limits are guaranteed by design, test and/or statistical analysis. All electrical characteristics having room-temperature limits are tested during production with $T_J = 25^\circ C$. All hot and cold limits are guaranteed by correlating the electrical characteristics to process and temperature variations and applying statistical process control.

(2) Capacitors: Low-ESR Surface-Mount Ceramic Capacitors (MLCCs) are used in setting electrical characteristics.

Typical Performance Characteristics

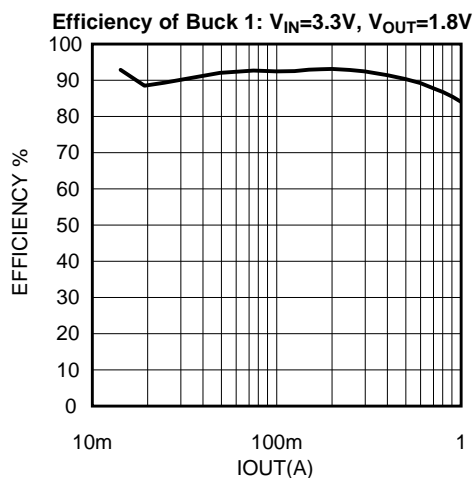


Figure 2.

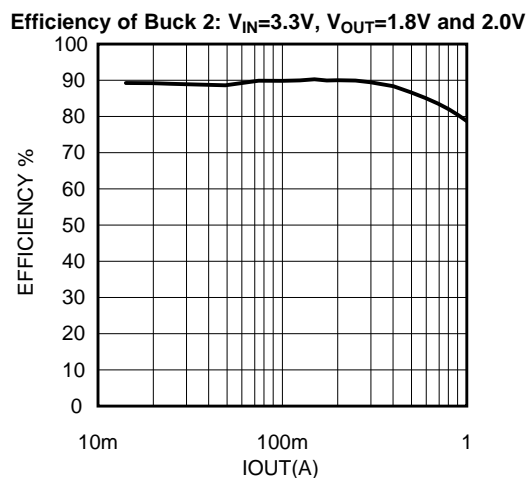


Figure 3.

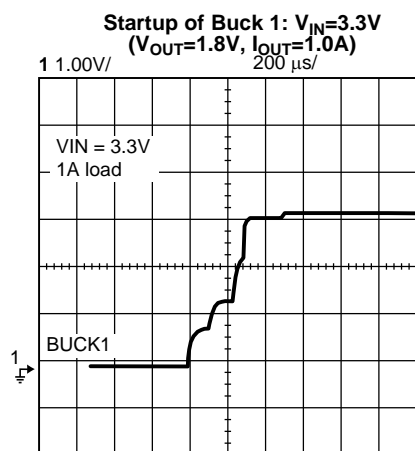


Figure 4.

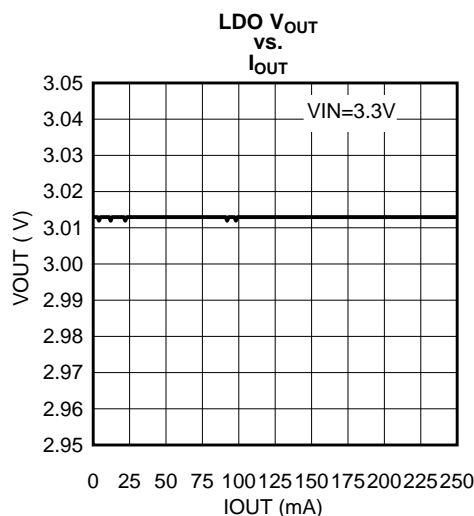


Figure 5.

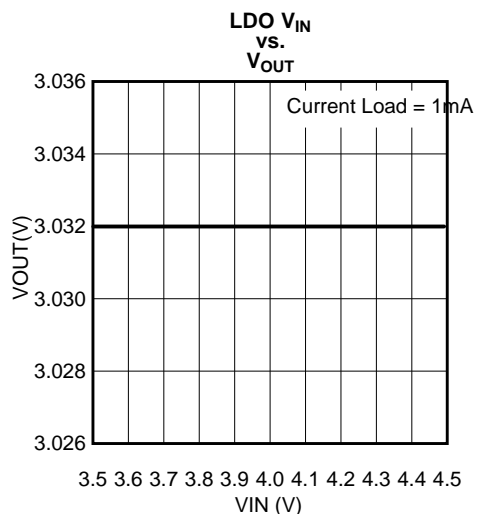


Figure 6.

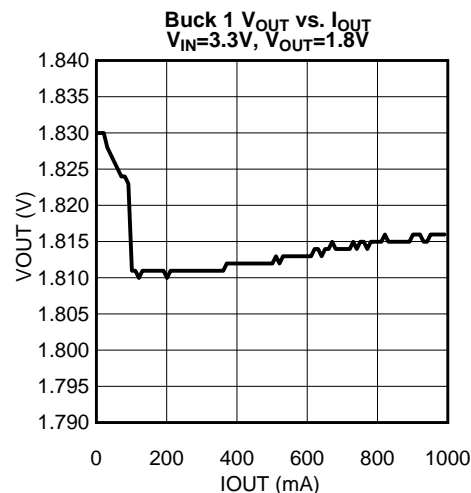


Figure 7.

Typical Performance Characteristics (continued)

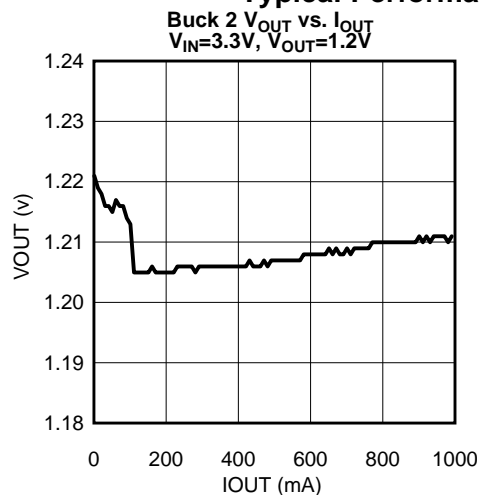


Figure 8.

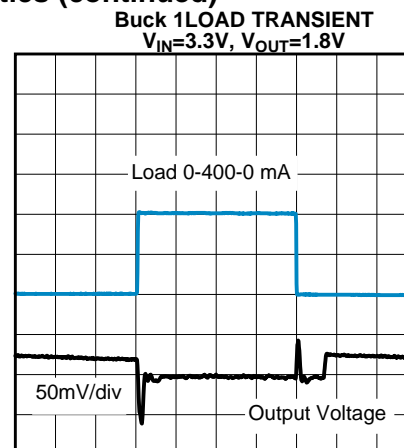


Figure 9.

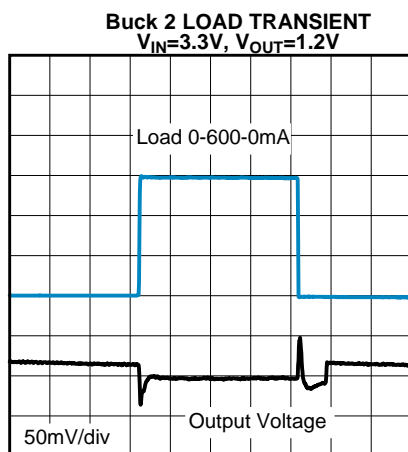


Figure 10.

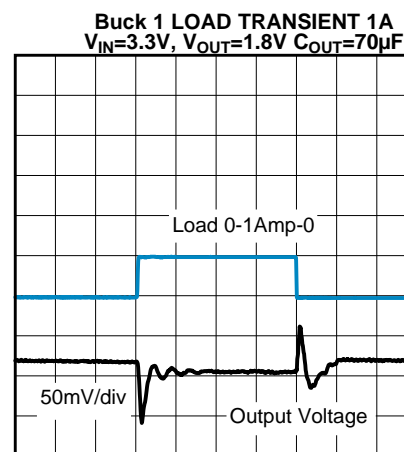


Figure 11.

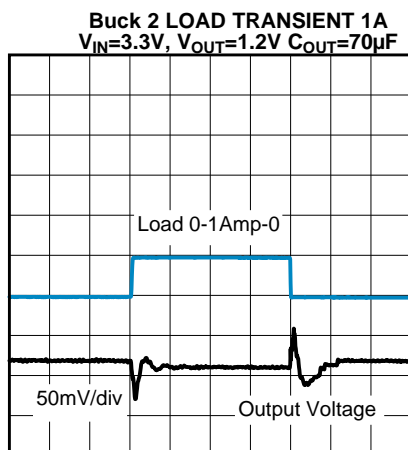


Figure 12.

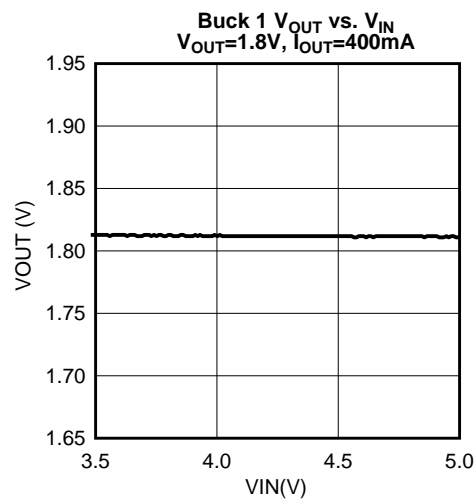


Figure 13.

Typical Performance Characteristics (continued)

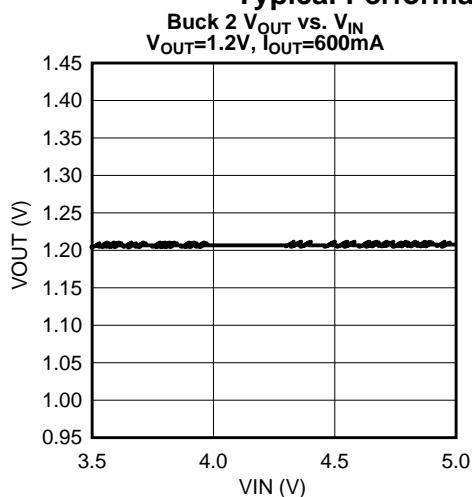


Figure 14.

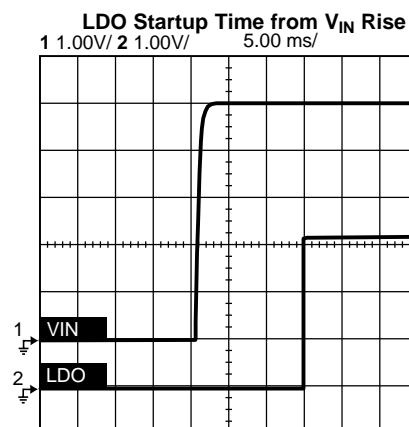


Figure 15.

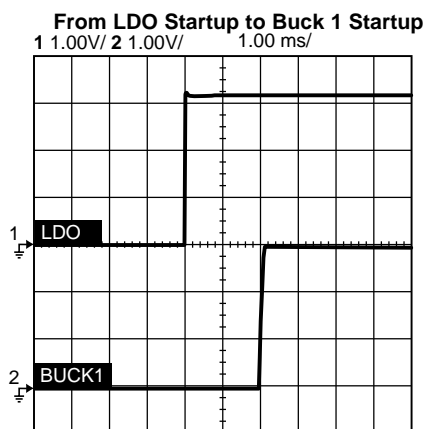


Figure 16.

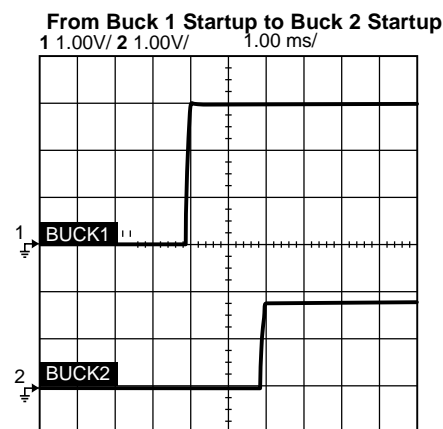


Figure 17.

GENERAL DESCRIPTION

LM10502, LM10602, LM10604 are highly efficient and integrated Power Management Unit for Systems-on-a-Chip (SoCs), ASICs, and processors. It operates cooperatively and communicates with processors over an SPI interface with output Voltage programmability.

The device incorporates two high-efficiency synchronous buck regulators and one LDO that deliver four output voltages from a single power source. The device also includes a SPI-programmable Comparator Block that provides an interrupt output signal.

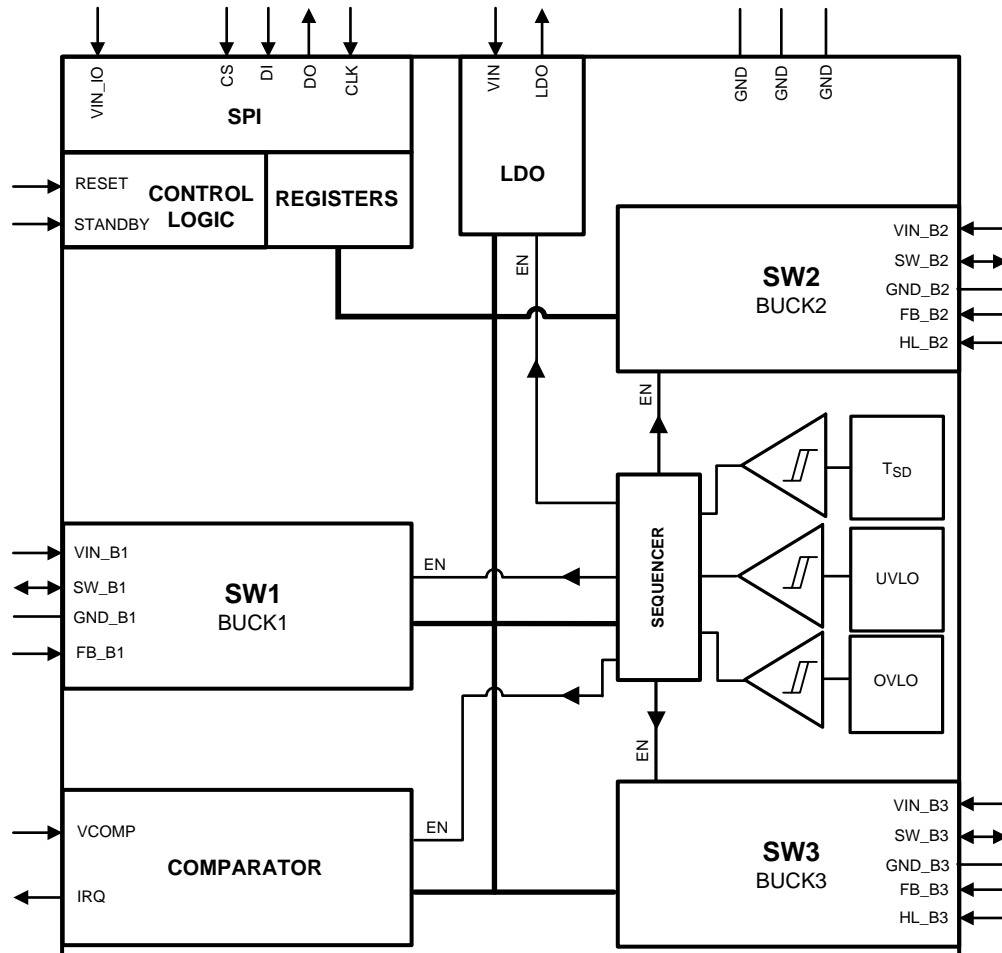


Figure 18. Internal Block Diagram of the LM10502, LM10602, LM10604 PMIC

SPI DATA INTERFACE

The device is programmable via 4-wire SPI Interface. The signals associated with this interface are CS, DI, DO and CLK. Through this interface, the user can enable/disable the device, program the output voltages of the individual Bucks and of course read the status of Flag registers.

By accessing the registers in the device through this interface, the user can get access and control the operation of the buck controllers and program the reference voltage of the comparator in the device.

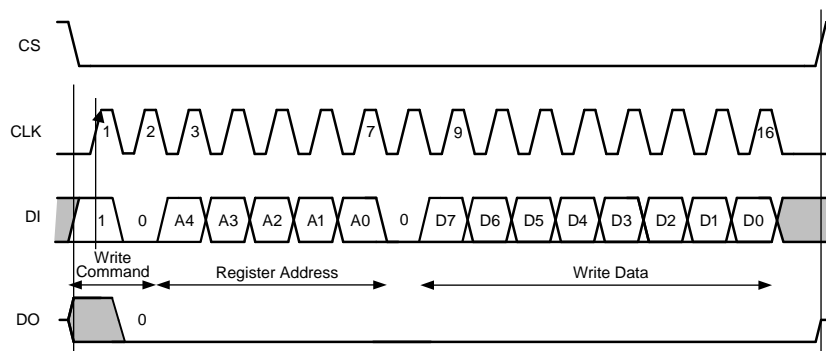


Figure 19. SPI Interface Write

- Data In (DI)
 - 1 to 0 Write Command
 - A₄ to A₀ Register address to be written
 - D₇ to D₀ Data to be written
- Data Out (DO)
 - All 0s

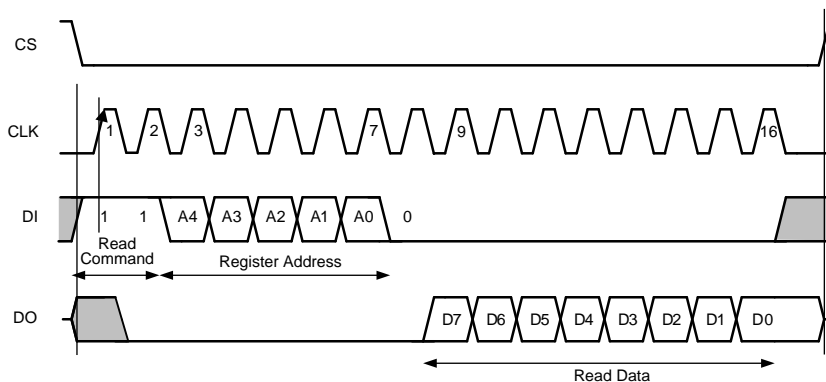


Figure 20. SPI Interface Read

- Data In (DI)
 - 1 to 1 Read Command
 - A₄to A₀ Register address to be read
- Data Out (DO)
 - D₇ to D₀ Data Read

Registers Configurable Via The SPI Interface

Addr	Reg Name	Bit	R/W	Default	Description	Notes
0x00	Buck 2 Voltage	7	—	See Comments		Reset default:
		6	R/W		Buck 2 Voltage Code[6]	0x64 (1.2V)
		5	R/W		Buck 2 Voltage Code[5]	
		4	R/W		Buck 2 Voltage Code[4]	
		3	R/W		Buck 2 Voltage Code[3]	Range: 0.7V to 1.335V
		2	R/W		Buck 2 Voltage Code[2]	
		1	R/W		Buck 2 Voltage Code[1]	
		0	R/W		Buck 2 Voltage Code[0]	
0x07	Reserved		— —	See Comments		Do Not use ⁽¹⁾
0x08	Buck 1 Voltage	7	—	See Comments		Reset default:
		6	—			0x0E (1.8V)
		5	R/W		Buck 1 Voltage Code[5]	
		4	R/W		Buck 1 Voltage Code[4]	
		3	R/W		Buck 1 Voltage Code[3]	Range: 1.1V to 3.6V
		2	R/W		Buck 1 Voltage Code[2]	
		1	R/W		Buck 1 Voltage Code[1]	
		0	R/W		Buck 1 Voltage Code[0]	
0x09	Reserved			See Comments		Do not use. ⁽¹⁾
0x0A	Buck Control	7	—	0 0 - 1		Do not use. ⁽¹⁾
		6	—			
		5	—			
		4				Do not use. ⁽¹⁾
		3	R/W		BK1FPWM	Buck 1 forced PWM mode when high
		2	R/W		BK2FPWM	Buck 2 forced PWM mode when high
		1	R/W			Do not use. ⁽¹⁾
		0	R/W		BK1EN	Enables Buck 1 0-disabled, 1-enabled
0x0B	Comparator Control	7	R/W	0	Comp_hyst[0]	Doubles Comparator hysteresis
		6	R/W	0	Comp_thres[5]	Programmable range of 2.0V to 4.0V, step size = 31.75 mV;
		5	R/W	1	Comp_thres[4]	
		4	R/W	1	Comp_thres[3]	Comparator Threshold reset default: 0x19;
		3	R/W	0	Comp_thres[2]	
		2	R/W	0	Comp_thres[1]	Comp_hyst=1 → min 80 mV hysteresis
		1	R/W	1	Comp_thres[0]	Comp_hyst=0 → min 40 mV hysteresis
		0	R/W	1	COMPEN	Comparator enable
0x0C	Interrupt Enable	7	—	0 0 0 0 0 1		
		6	—			
		5	—			
		4	R/W		LDO OK	
		3	R/W		Buck 2 OK	
		2	R/W		Buck 1 OK	
		1	R/W		-	Do not use. ⁽¹⁾
		0	R/W		Comparator	Interrupt comp event

(1) RESERVED FOR FIRMWARE COMPATIBILITY WITH LM10506

Addr	Reg Name	Bit	R/W	Default	Description	Notes
0x0D	Interrupt Status	7	—			
		6	—			
		5	—			
		4	R		LDO OK	
		3	R		Buck 2 OK	
		2	R		Buck 1 OK	
		1	R		-	
		0	R		Comparator	
0x0E	MISC Control	7	—			
		6	—			
		5	—			
		4	—			
		3	—			
		2	—			
		1	R/W	0	LDO Sleep Mode	LDO goes into extra power save mode
		0	R/W	0	Interrupt Polarity	Interrupt_polarity= 0→ Active low Interrupt_polarity= 1→ Active high

ADDR 0x07& 0x08: Buck 1 Voltage Code and V_{OUT} Level Mapping

Voltage code	Voltage	Voltage code	Voltage
0x00	1.10	0x20	2.70
0x01	1.15	0x21	2.75
0x02	1.20	0x22	2.80
0x03	1.25	0x23	2.85
0x04	1.30	0x24	2.90
0x05	1.35	0x25	2.95
0x06	1.40	0x26	3.00
0x07	1.45	0x27	3.05
0x08	1.50	0x28	3.10
0x09	1.55	0x29	3.15
0x0A	1.60	0x2A	3.20
0x0B	1.65	0x2B	3.25
0x0C	1.70	0x2C	3.30
0x0D	1.75	0x2D	3.35
0x0E	1.80	0x2E	3.40
0x0F	1.85	0x2F	3.45
0x10	1.90	0x30	3.50
0x11	1.95	0x31	3.55
0x12	2.00	0x32	3.60
0x13	2.05	0x33	3.60
0x14	2.10	0x34	3.60
0x15	2.15	0x35	3.60
0x16	2.20	0x36	3.60
0x17	2.25	0x37	3.60
0x18	2.30	0x38	3.60
0x19	2.35	0x39	3.60
0x1A	2.40	0x3A	3.60
0x1B	2.45	0x3B	3.60

Voltage code	Voltage	Voltage code	Voltage
0x1C	2.50	0x3C	3.60
0x1D	2.55	0x3D	3.60
0x1E	2.60	0x3E	3.60
0x1F	2.65	0x3F	3.60

ADDR 0x00: Buck 2 Voltage Code and V_{OUT} Level Mapping

Voltage Code	Voltage	Voltage Code	Voltage	Voltage Code	Voltage	Voltage Code	Voltage
0x00	0.700	0x20	0.860	0x40	1.020	0x60	1.180
0x01	0.705	0x21	0.865	0x41	1.025	0x61	1.185
0x02	0.710	0x22	0.870	0x42	1.030	0x62	1.190
0x03	0.715	0x23	0.875	0x43	1.035	0x63	1.195
0x04	0.720	0x24	0.880	0x44	1.040	0x64	1.200
0x05	0.725	0x25	0.885	0x45	1.045	0x65	1.205
0x06	0.730	0x26	0.890	0x46	1.050	0x66	1.210
0x07	0.735	0x27	0.895	0x47	1.055	0x67	1.215
0x08	0.740	0x28	0.900	0x48	1.060	0x68	1.220
0x09	0.745	0x29	0.905	0x49	1.065	0x69	1.225
0x0A	0.750	0x2A	0.910	0x4A	1.070	0x6A	1.230
0x0B	0.755	0x2B	0.915	0x4B	1.075	0x6B	1.235
0x0C	0.760	0x2C	0.920	0x4C	1.080	0x6C	1.240
0x0D	0.765	0x2D	0.925	0x4D	1.085	0x6D	1.245
0x0E	0.770	0x2E	0.930	0x4E	1.090	0x6E	1.250
0x0F	0.775	0x2F	0.935	0x4F	1.095	0x6F	1.255
0x10	0.780	0x30	0.940	0x50	1.100	0x70	1.260
0x11	0.785	0x31	0.945	0x51	1.105	0x71	1.265
0x12	0.790	0x32	0.950	0x52	1.110	0x72	1.270
0x13	0.795	0x33	0.955	0x53	1.115	0x73	1.275
0x14	0.800	0x34	0.960	0x54	1.120	0x74	1.280
0x15	0.805	0x35	0.965	0x55	1.125	0x75	1.285
0x16	0.810	0x36	0.970	0x56	1.130	0x76	1.290
0x17	0.815	0x37	0.975	0x57	1.135	0x77	1.295
0x18	0.820	0x38	0.980	0x58	1.140	0x78	1.300
0x19	0.825	0x39	0.985	0x59	1.145	0x79	1.305
0x1A	0.830	0x3A	0.990	0x5A	1.150	0x7A	1.310
0x1B	0.835	0x3B	0.995	0x5B	1.155	0x7B	1.315
0x1C	0.840	0x3C	1.000	0x5C	1.160	0x7C	1.320
0x1D	0.845	0x3D	1.005	0x5D	1.165	0x7D	1.325
0x1E	0.850	0x3E	1.010	0x5E	1.170	0x7E	1.330
0x1F	0.855	0x3F	1.015	0x5F	1.175	0x7F	1.335

ADDR 0x0B: Comparator Threshold Mapping

Voltage code	Voltage	Voltage code	Voltage
0x00	2.000	0x20	3.016
0x01	2.032	0x21	3.048
0x02	2.064	0x22	3.080
0x03	2.095	0x23	3.111
0x04	2.127	0x24	3.143

Voltage code	Voltage	Voltage code	Voltage
0x05	2.159	0x25	3.175
0x06	2.191	0x26	3.207
0x07	2.222	0x27	3.238
0x08	2.254	0x28	3.270
0x09	2.286	0x29	3.302
0x0A	2.318	0x2A	3.334
0x0B	2.349	0x2B	3.365
0x0C	2.381	0x2C	3.397
0x0D	2.413	0x2D	3.429
0x0E	2.445	0x2E	3.461
0x0F	2.476	0x2F	3.492
0x10	2.508	0x30	3.524
0x11	2.540	0x31	3.556
0x12	2.572	0x32	3.588
0x13	2.603	0x33	3.619
0x14	2.635	0x34	3.651
0x15	2.667	0x35	3.683
0x16	2.699	0x36	3.715
0x17	2.730	0x37	3.746
0x18	2.762	0x38	3.778
0x19	2.794	0x39	3.810
0x1A	2.826	0x3A	3.842
0x1B	2.857	0x3B	3.873
0x1C	2.889	0x3C	3.905
0x1D	2.921	0x3D	3.937
0x1E	2.953	0x3E	3.969
0x1F	2.984	0x3F	4.000

BUCK REGULATORS OPERATION

A buck converter contains a control block, a switching PFET connected between input and output, a synchronous rectifying NFET connected between the output and ground and a feedback path. The following figure shows the block diagram of each of the three buck regulators integrated in the device.

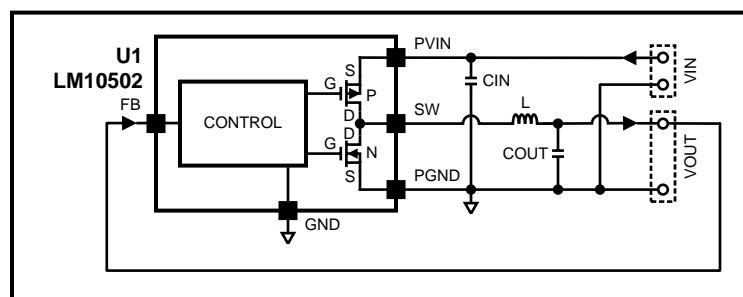


Figure 21. Buck Functional Diagram

During the first portion of each switching cycle, the control block turns on the internal PFET switch. This allows current to flow from the input through the inductor to the output filter capacitor and load. The inductor limits the current to a ramp with a slope of $(V_{IN} - V_{OUT})/L$ by storing energy in a magnetic field. During the second portion of each cycle, the control block turns the PFET switch off, blocking current flow from the input, and then turns the NFET synchronous rectifier on. The inductor draws current from ground through the NFET to the output filter capacitor and load, which ramps the inductor current down with a slope of $(-V_{OUT})/L$.

The output filter stores charge when the inductor current is high, and releases it when low, smoothing the voltage across the load. The output voltage is regulated by modulating the PFET switch on time to control the average current sent to the load. The effect is identical to sending a duty-cycle modulated rectangular wave formed by the switch and synchronous rectifier at the SW pin to a low-pass filter formed by the inductor and output filter capacitor. The output voltage is equal to the average voltage at the SW pin.

Buck Regulators Description

The LM10502, LM10602 and LM10604 incorporates three high-efficiency synchronous switching buck regulators that deliver various voltages from a single DC input voltage. They include many advanced features to achieve excellent voltage regulation, high efficiency and fast transient response time. The bucks feature voltage mode architecture with synchronous rectification.

Each of the switching regulators is specially designed for high-efficiency operation throughout the load range. With a 2MHz typical switching frequency, the external L- C filter can be small and still provide very low output voltage ripple. The bucks are internally compensated to be stable with the recommended external inductors and capacitors as detailed in the application diagram. Synchronous rectification yields high efficiency for low voltage and high output currents.

All bucks can operate up to a 100% duty cycle allowing for the lowest possible input voltage that still maintains the regulation of the output. The lowest input to output dropout voltage is achieved by keeping the PMOS switch on.

Additional features include soft-start, undervoltage lockout, bypass, and current and thermal overload protection. To reduce the input current ripple, the device employs a control circuit that operates the two bucks **at 180° phase**. These bucks are nearly identical in performance and mode of operation. They can operate in FPWM (forced PWM) or automatic mode (PWM/PFM).

PWM Operation

During PWM operation the converter operates as a voltage-mode controller with input voltage feed forward. This allows the converter to achieve excellent load and line regulation. The DC gain of the power stage is proportional to the input voltage. To eliminate this dependence, a feed forward voltage inversely proportional to the input voltage is introduced.

In **Forced PWM Mode** the bucks always operate in PWM mode regardless of the output current.

In **Automatic Mode**, if the output current is less than 70 mA (typ.), the bucks automatically transition into PFM (Pulse Frequency Modulation) operation to reduce the current consumption, while at higher than 70mA (typ) they operate in PWM mode. This increases the efficiency at lower output currents.

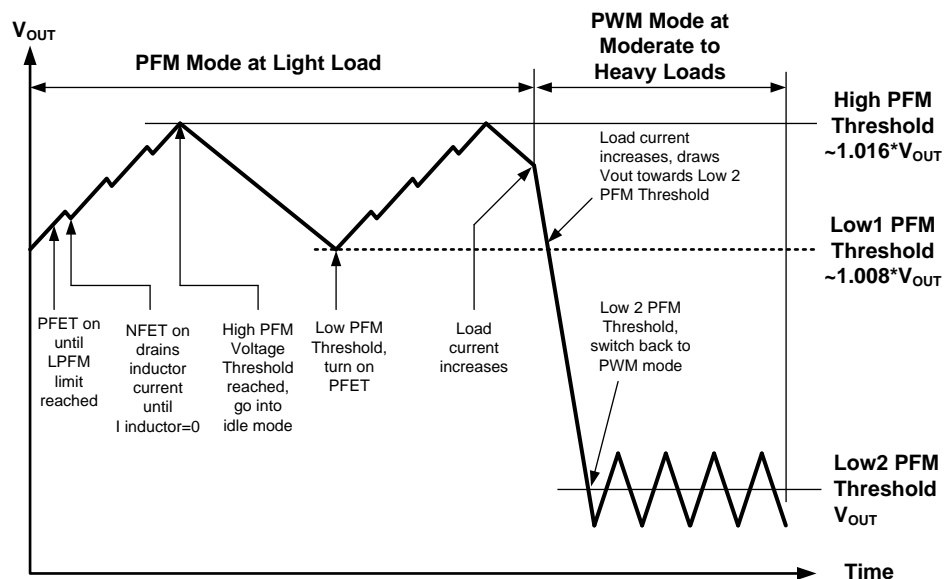


Figure 22. PFM vs PWM Operation

PFM Operation (Bucks 1 & 2)

At very light loads, Buck 1, and Buck 2 enter PFM mode and operate with reduced switching frequency and supply current to maintain high efficiency.

Buck 1, and 2 will automatically transition into PFM mode when either of two conditions occurs for a duration of 32 or more clock cycles:

1. The inductor current becomes discontinuous, or
2. The peak PMOS switch current drops below the I_{MODE} level.

During PFM operation, the converter positions the output voltage slightly higher than the nominal output voltage during PWM operation, allowing additional headroom for voltage drop during a load transient from light to heavy load. The PFM comparators sense the output voltage via the feedback pin and control the switching of the output FETs such that the output voltage ramps between 0.8% and 1.6% (typical) above the nominal PWM output voltage. If the output voltage is below the 'high' PFM comparator threshold, the PMOS power switch is turned on. It remains on until the output voltage exceeds the 'high' PFM threshold or the peak current exceeds the I_{PFM} level set for PFM mode.

Once the PMOS power switch is turned off, the NMOS power switch is turned on until the inductor current ramps to zero. When the NMOS zero-current condition is detected, the NMOS power switch is turned off. If the output voltage is below the 'high' PFM comparator threshold (see [Figure 22](#)), the PMOS switch is again turned on and the cycle is repeated until the output reaches the desired level. Once the output reaches the 'high' PFM threshold, the NMOS switch is turned on briefly to ramp the inductor current to zero and then both output switches are turned off and the part enters an extremely low power mode. Quiescent supply current during this 'idle' mode is less than 100 μA , which allows the part to achieve high efficiencies under extremely light load conditions. When the output drops below the 'low' PFM threshold, the cycle repeats to restore the output voltage to ~1.6% above the nominal PWM output voltage.

If the load current should increase during PFM mode causing the output voltage to fall below the 'low2' PFM threshold, the part will automatically transition into fixed-frequency PWM mode.

Soft Start

Each of the buck converters has an internal soft-start circuit that limits the in-rush current during startup. This allows the converters to gradually reach the steady-state operating point, thus reducing startup stresses and surges. During startup, the switch current limit is increased in steps.

For **Buck 1 and 2** the soft start is implemented by increasing the switch current limit in steps that are gradually set higher. The startup time depends on the output capacitor size, load current and output voltage. Typical startup time with the recommended output capacitor of 22 μF is 0.2 to 1ms. It is expected that in the final application the load current condition will be more likely in the lower load current range during the start up.

Current Limiting

A current limit feature protects the device and any external components during overload conditions. In PWM mode the current limiting is implemented by using an internal comparator that trips at current levels according to the buck capability. If the output is shorted to ground the device enters a timed current limit mode where the NFET is turned on for a longer duration until the inductor current falls below a low threshold, ensuring inductor current has more time to decay, thereby preventing runaway.

Internal Synchronous Rectification

While in PWM mode, the bucks use an internal NFET as a synchronous rectifier to reduce the rectifier forward voltage drop and the associated power loss. Synchronous rectification provides a significant improvement in efficiency whenever the output voltage is relatively low compared to the voltage drop across an ordinary rectifier diode.

Low Dropout Operation

The device can operate at 100% duty cycle (no switching; PMOS switch completely on) for low dropout support. In this way the output voltage will be controlled down to the lowest possible input voltage. When the device operates near 100% duty cycle, output voltage ripple is approximately 25 mV.

The minimum input voltage needed to support the output voltage:

$$V_{IN_MIN} = V_{OUT} + I_{LOAD} * (R_{DSON_PFET} + R_{IND})$$

Where,

- I_{LOAD} = Load Current
- R_{DSON_PFET} = Drain to source resistance of PFET (high side) .
- R_{IND} = Inductor resistance

(1)

Out Of Regulation

When any of the Buck outputs are taken out of regulation (below 85% of the output level) the device will start a shutdown sequence and all other outputs will switch off normally. The device will restart when the forced out-of-regulation condition is removed.

Device Operating Modes

STARTUP SEQUENCE

The startup mode of the LM10502 family will depend on the input voltage. Once V_{IN} reaches the UVLO threshold, there is a 15 msec delay before the LM10502 determines how to set up the buck regulators. If V_{IN} is greater than 3.6V, the bucks will start up as the standard regulators. The 2 buck regulators are staggered during startup to avoid large inrush currents. There is a fixed delay of 2 msec between the startup of each regulator.

The Startup Sequence will be:

1. 15 msec ($\pm 30\%$) delay after V_{IN} above UVLO
2. LDO \rightarrow 3V
3. 2 msec delay
4. Buck 1 \rightarrow 1.8V
5. 2 msec delay
6. Buck 2 \rightarrow 1.2V

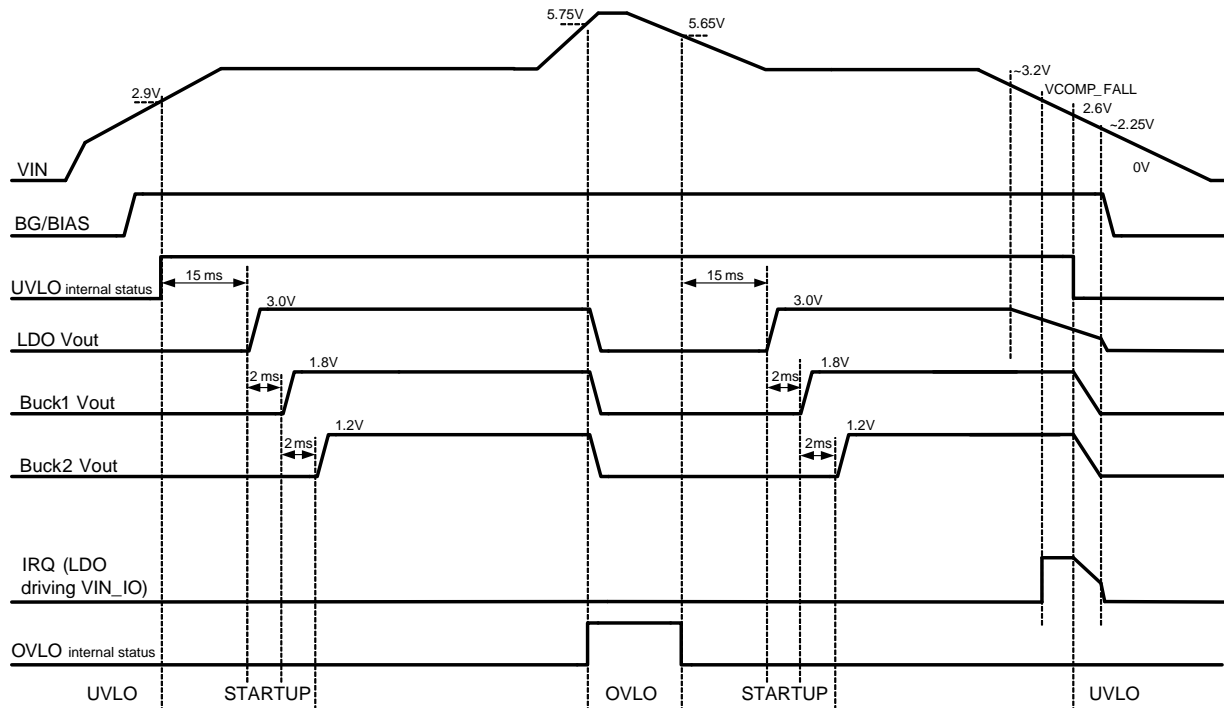


Figure 23. Operating Modes

POWER-ON DEFAULT AND DEVICE ENABLE

The device is always enabled and the LDO is always on, unless outside of operating voltage range. There is no LM10502 Enable Pin. Once V_{IN} reaches a minimum required input Voltage the power-up sequence will be started automatically and the startup sequence will be initiated. Once the device is started, the output voltage of the Bucks can be individually disabled by accessing their corresponding BKEN register bits (BUCK CONTROL).

RESET: PIN FUNCTION

The RESET pin is internally pulled high. If the reset pin is pulled low, the device will perform a complete reset of all the registers to their default states. This means that all of the voltage settings on the regulators will go back to their default states.

UNDERVOLTAGE LOCKOUT (UVLO)

The V_{IN} voltage is monitored for a supply under voltage condition, for which the operation of the device can not be guaranteed. The part will automatically disable the bucks. To prevent unstable operation, the undervoltage lockout (UVLO) has a hysteresis window of about 300 mV. An under voltage lock out (UVLO) will force the device into the reset state, all internal registers are reset. Once the supply voltage is above the UVLO hysteresis, the device will initiate a power-up sequence and then enter the active state.

The LDO and the Comparator will remain functional past the UVLO threshold until V_{IN} reaches approximately 2.25V.

OVERVOLTAGE LOCKOUT (OVLO)

The V_{IN} voltage is monitored for a supply over voltage condition, for which the operation of the device cannot be guaranteed. The purpose of overvoltage lockout (OVLO) is to protect the part and all other consumers connected to the PMU outputs from any damage and malfunction. Once V_{IN} rises over 5.7V all the Bucks, and LDO will be disabled automatically. To prevent unstable operation, the OVLO has a hysteresis window of about 100 mV. An OVLO will force the device into the reset state; all internal registers are reset. Once the supply voltage is below the OVLO hysteresis, the device will initiate a power-up sequence, and then enter the active state. Operating maximum input voltage at which parameters are guaranteed is 5.5V. Absolute maximum of the device is 6.0V.

DEVICE STATUS, INTERRUPT ENABLE

The LM10502 family of parts has 2 interrupt registers, INTERRUPT ENABLE and INTERRUPT STATUS. These registers can be read via the serial interface. The interrupts are not latched to the register and will always represent the current state and will not be cleared on a read.

If interrupt condition is detected, then corresponding bit in the INTERRUPT STATUS register (0x0D) is set to '1', and Interrupt output is asserted. There are 4 interrupt generating conditions:

- Buck 2 output is over flag level (90% when rising, 85% when falling)
- Buck 1 output is over flag level (90% when rising, 85% when falling)
- LDO is over flag level (90% when rising, 85% when falling)
- Comparator input voltage crosses over selected threshold

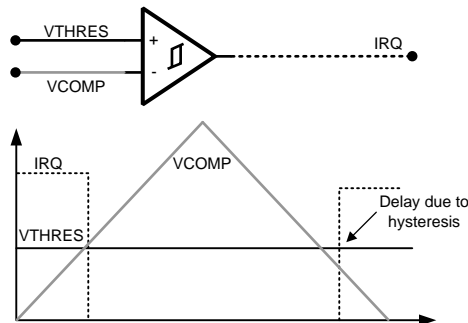
Reading the interrupt register will not release IRQ output. Interrupt generation conditions can be individually enabled or disabled by writing respective bits in INTERRUPT ENABLE register (0x0C) to '1' or '0'.

THERMAL SHUTDOWN (TSD)

The temperature of the silicon die is monitored for an over-temperature condition, for which the operation of the device can not be guaranteed. The part will automatically be disabled if the temperature is too high. The thermal shutdown (TSD) will force the device into the reset state. In reset, all circuitry is disabled. To prevent unstable operation, the TSD has a hysteresis window of about 20°C. Once the temperature has decreased below the TSD hysteresis, the device will initiate a powerup sequence and then enter the active state. In the active state, the part will start up as if for the first time, all registers will be in their default state.

COMPARATOR

The general-purpose comparator on the LM10502 family takes its inputs from the VCOMP pin, which may be connected according to user preferences and an internal threshold level is programmed by the user. The threshold level is programmable between 2.0 and 4.0V with a step of 31mV and a default value of 2.794V. The output of the comparator is the IRQ pin which polarity can be changed using Register 0x0E bit 0. If Interrupt_polarity = 0 → Active low (default) is selected, then the output is low if V_{COMP} value is greater than the threshold level. The output is high if the V_{COMP} value is less than the threshold level. If Interrupt_polarity = 1 → Active high is selected then the output is high if V_{COMP} value is greater than the threshold level. The output is low if the V_{COMP} value is less than the threshold level. There is some hysteresis when V_{COMP} transitions from high to low, typically 60 mV. There is a control bit in register 0x0B, comparator control, that can double the hysteresis value.



LDO

For stability the LDO needs to have an external capacitor connected to its output with a recommended minimum value of 1μF. It is important to select the type of capacitor whose capacitance in no case (voltage temperature, etc) will be outside the limits specified in the LDO electrical characteristics.

RECOMMENDATIONS FOR UNUSED FUNCTIONS AND PINS

If any function is not used in the end application, then the following recommendations for tying off the associated pins on the circuit boards should be used.

FUNCTION	PIN	IF UNUSED
BUCK 1	VIN_B1	CONNECT TO VIN
	SW_B1	CONNECT TO VIN
	FB_B1	CONNECT TO GND
BUCK 2	VIN_B2	CONNECT TO VIN
	SW_B2	CONNECT TO VIN
	FB_B2	CONNECT TO GND
SPI	SPI_CS	CONNECT TO VIN_IO
	SPI_DI	CONNECT TO GND
	SPI_DO	CONNECT TO GND
	SPI_CLK	CONNECT TO GND
LDO_VIN		CONNECT TO GND
RESET		CONNECT TO VIN_IO
COMPARATOR	VCOMP	CONNECT TO VIN
	IRQ	LEAVE OPEN

External Components Selection

All two switchers require an input capacitor and an output inductor-capacitor filter. These components are critical to the performance of the device. All two switchers are internally compensated and do not require external components to achieve stable operation. The output voltages of the bucks can be programmed through the SPI pins.

OUTPUT INDUCTORS & CAPACITORS SELECTION

There are several design considerations related to the selection of output inductors and capacitors:

- Load transient response
- Stability
- Efficiency
- Output ripple voltage
- Over current ruggedness

The device has been optimized for use with nominal LC values as shown in the Typical Application Circuit .

INDUCTOR SELECTION

The recommended inductor values are shown in Application Diagram [Typical Application Diagram](#). It is important to guarantee the inductor core does not saturate during any foreseeable operational situation. The inductor should be rated to handle the peak load current plus the ripple current:

Care should be taken when reviewing the different saturation current ratings that are specified by different manufacturers. Saturation current ratings are typically specified at 25°C, so ratings at maximum ambient temperature of the application should be requested from the manufacturer.

$$\begin{aligned}
 I_{L(MAX)} &= I_{LOAD(MAX)} + \Delta I_{RIPPLE} \\
 &= I_{LOAD(MAX)} + \frac{D \times (V_{IN} - V_{OUT})}{2 \times L \times F_S} \\
 &\approx I_{LOAD(MAX)} + \frac{D \times (V_{IN} - V_{OUT})}{2 \times 2.2 \times 2.0} \text{ (A typ.)}, \\
 D &= \frac{V_{OUT}}{V_{IN}}, F_S = 2 \text{ MHz}, L = 2.2 \mu\text{H}
 \end{aligned}
 \tag{2}$$

There are two methods to choose the inductor saturation current rating:

Recommended Method for Inductor Selection:

The best way to guarantee the inductor does not saturate is to choose an inductor that has saturation current rating greater than the maximum device current limit, as specified in the [Electrical Characteristics](#) tables. In this case the device will prevent inductor saturation by going into current limit before the saturation level is reached.

Alternate Method for Inductor Selection:

If the recommended approach cannot be used care must be taken to guarantee that the saturation current is greater than the peak inductor current:

$$\begin{aligned}
 I_{SAT} &> I_{LPEAK} \\
 I_{LPEAK} &= I_{OUTMAX} + \frac{I_{RIPPLE}}{2} \\
 I_{RIPPLE} &= \frac{D \times (V_{IN} - V_{OUT})}{L \times F_S} \\
 D &= \frac{V_{OUT}}{V_{IN} \times EFF}
 \end{aligned}$$

- I_{SAT} : Inductor saturation current at operating temperature
- I_{LPEAK} : Peak inductor current during worst case conditions
- I_{OUTMAX} : Maximum average inductor current
- I_{RIPPLE} : Peak-to-Peak inductor current
- V_{OUT} : Output voltage
- V_{IN} : Input voltage
- L : Inductor value in Henries at I_{OUTMAX}
- F : Switching frequency, Hertz
- D : Estimated duty factor
- EFF : Estimated power supply efficiency

(3)

I_{SAT} may not be exceeded during any operation, including transients, startup, high temperature, worst-case conditions, etc.

Suggested Inductors and Their Suppliers

The designer should choose the inductors that best match the system requirements. A very wide range of inductors are available as regarding physical size, height, maximum current (thermally limited, and inductance loss limited), series resistance, maximum operating frequency, losses, etc. In general, smaller physical size inductors will have higher series resistance (DCR) and implicitly lower overall efficiency is achieved. Very low-profile inductors may have even higher series resistance. The designer should try to find the best compromise between system performance and cost.

Table 2. Recommended Inductors

Value	Manufacturer	Part Number	DCR	Current	Package
2.2 μ H	Murata	LQH55PN2R2NR0L	31 m Ω	2.5A	2220
2.2 μ H	TDK	NLC565050T-2R2K-PF	60 m Ω	1.3A	2220
2.2 μ H	Murata	LQM2MPN2R2NG0	110 m Ω	1.2A	806

OUTPUT AND INPUT CAPACITORS CHARACTERISTICS

Special attention should be paid when selecting these components. As shown in the following figure, the DC bias of these capacitors can result in a capacitance value that falls below the minimum value given in the recommended capacitor specifications table. Note that the graph shows the capacitance out of spec for the 0402 case size capacitor at higher bias voltages. It is therefore recommended that the capacitor manufacturers' specifications for the nominal value capacitor are consulted for all conditions, as some capacitor sizes (e.g., 0402) may not be suitable in the actual application.

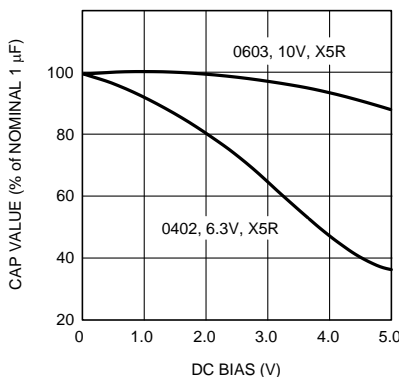


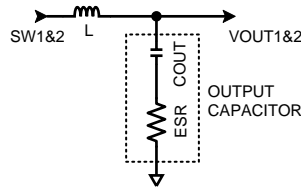
Figure 24. Typical Variation in Capacitance vs. DC Bias

The ceramic capacitor's capacitance can vary with temperature. The capacitor type X7R, which operates over a temperature range of -55°C to $+125^{\circ}\text{C}$, will only vary the capacitance to within $\pm 15\%$. The capacitor type X5R has a similar tolerance over a reduced temperature range of -55°C to $+85^{\circ}\text{C}$. Many large value ceramic capacitors, larger than $1\mu\text{F}$ are manufactured with Z5U or Y5V temperature characteristics. Their capacitance can drop by more than 50% as the temperature varies from 25°C to 85°C . Therefore X7R is recommended over Z5U and Y5V in applications where the ambient temperature will change significantly above or below 25°C .

Tantalum capacitors are less desirable than ceramic for use as output capacitors because they are more expensive when comparing equivalent capacitance and voltage ratings in the $0.47\mu\text{F}$ to $44\mu\text{F}$ range. Another important consideration is that tantalum capacitors have higher ESR values than equivalent size ceramics. This means that while it may be possible to find a tantalum capacitor with an ESR value within the stable range, it would have to be larger in capacitance (which means bigger and more costly) than a ceramic capacitor with the same ESR value. It should also be noted that the ESR of a typical tantalum will increase about 2:1 as the temperature goes from 25°C down to -40°C , so some guard band must be allowed.

Output Capacitor Selection

The output capacitor of a switching converter absorbs the AC ripple current from the inductor and provides the initial response to a load transient. The ripple voltage at the output of the converter is the product of the ripple current flowing through the output capacitor and the impedance of the capacitor. The impedance of the capacitor can be dominated by capacitive, resistive, or inductive elements within the capacitor, depending on the frequency of the ripple current. Ceramic capacitors have very low ESR and remain capacitive up to high frequencies. Their inductive component can usually be neglected at the frequency ranges at which the switcher operates.



The output-filter capacitor smooths out the current flow from the inductor to the load and helps maintain a steady output voltage during transient load changes. It also reduces output voltage ripple. These capacitors must be selected with sufficient capacitance and low enough ESR to perform these functions.

Note that the output voltage ripple increases with the inductor current ripple and the Equivalent Series Resistance of the output capacitor (ESR_{COUT}). Also note that the actual value of the capacitor's ESR_{COUT} is frequency and temperature dependent, as specified by its manufacturer. The ESR should be calculated at the applicable switching frequency and ambient temperature.

$$V_{OUT-RIPPLE-PP} = \frac{\Delta I_{RIPPLE}}{8 \times F_S \times C_{OUT}} \text{ where } \Delta I_{RIPPLE} = \frac{D \times (V_{IN} - V_{OUT})}{2 \times L \times F_S} \text{ and } D = \frac{V_{OUT}}{V_{IN}}$$

Output ripple can be estimated from the vector sum of the reactive (capacitance) voltage component and the real (ESR) voltage component of the output capacitor where:

$$V_{OUT-RIPPLE-PP} = \sqrt{V_{ROUT}^2 + V_{COUT}^2} \quad (4)$$

where:

$$V_{ROUT} = I_{RIPPLE} \times ESR_{COUT} \text{ and } V_{COUT} = \frac{I_{RIPPLE}}{8 \times F_S \times C_{OUT}}$$

- $V_{OUT-RIPPLE-PP}$: estimated output ripple,
- V_{ROUT} : estimated real output ripple,
- V_{COUT} : estimated reactive output ripple.

The device is designed to be used with ceramic capacitors on the outputs of the buck regulators. The recommended dielectric type of these capacitors is X5R, X7R, or of comparable material to maintain proper tolerances over voltage and temperature. The recommended value for the output capacitors is 22 μ F, 6.3V with an ESR of 2m Ω or less. The output capacitors need to be mounted as close as possible to the output/ground pins of the device.

Table 3. Recommended Output Capacitors

Model	Type Vendor	Vendor	Voltage Rating	Case Size
08056D226MAT2A	Ceramic, X5R	AVX Corporation	6.3V	0805, (2012)
C0805L226M9PACTU	Ceramic, X5R	Kemet	6.3V	0805, (2012)
ECJ-2FB0J226M	Ceramic, X5R	Panasonic - ECG	6.3V	0805, (2012)
JMK212BJ226MG-T	Ceramic, X5R	Taiyo Yuden	6.3V	0603, (1608)
C2012X5R0J226M	Ceramic, X5R	TDK Corporation	6.3V	0603, (1608)

Input Capacitor Selection

There are 2 buck regulators in the LM10502 device. Each of these buck regulators has its own input capacitor which should be located as close as possible to their corresponding VIN_Bx and GND_Bx pins, where x designates buck 1 or 2. The 2 buck regulators operate at 120° out of phase, which means that they switch on at equally spaced intervals, in order to reduce the input power rail ripple. It is recommended to connect all the supply/ground pins of the buck regulators, VIN_Bx to two solid internal planes located under the device. In this way, the 2 input capacitors work together and further reduce the input current ripple. A larger tantalum capacitor can also be located in the proximity of the device.

The input capacitor supplies the AC switching current drawn from the switching action of the internal power FETs. The input current of a buck converter is discontinuous, so the ripple current supplied by the input capacitor is large. The input capacitor must be rated to handle both the RMS current and the dissipated power.

The input capacitor must be rated to handle this current:

$$I_{RMS_CIN} = I_{OUT} \frac{\sqrt{V_{OUT} (V_{IN} - V_{OUT})}}{V_{IN}} \quad (6)$$

The power dissipated in the input capacitor is given by:

$$P_{D_CIN} = I_{RMS_CIN}^2 \times R_{ESR_CIN} \quad (7)$$

The device is designed to be used with ceramic capacitors on the inputs of the buck regulators. The recommended dielectric type of these capacitors is X5R, X7R, or of comparable material to maintain proper tolerances over voltage and temperature. The minimum recommended value for the input capacitor is 10 µF with an ESR of 10 mΩ or less. The input capacitors need to be mounted as close as possible to the power/ground input pins of the device.

The input power source supplies the average current continuously. During the PFET switch on-time, however, the demanded di/dt is higher than can be typically supplied by the input power source. This delta is supplied by the input capacitor.

A simplified “worst case” assumption is that all of the PFET current is supplied by the input capacitor. This will result in conservative estimates of input ripple voltage and capacitor RMS current.

Input ripple voltage is estimated as follows:

$$V_{PPIN} = \frac{I_{OUT} \times D}{C_{IN} \times F_S} + I_{OUT} \times ESR_{CIN}$$

where:

- V_{PPIN}: estimated peak-to-peak input ripple voltage,
 - I_{OUT}: Output Current
 - C_{IN}: Input capacitor value
 - ESR_{CIN}: input capacitor ESR.
- (8)

This capacitor is exposed to significant RMS current, so it is important to select a capacitor with an adequate RMS current rating. Capacitor RMS current estimated as follows:

$$I_{RMS_CIN} = \sqrt{D \times \left(I_{OUT}^2 + \frac{I_{RIPPLE}^2}{12} \right)}$$

- I_{RMS_CIN}: estimated input capacitor RMS current.

(9)

PCB Layout Considerations

PC board layout is an important part of DC-DC converter design. Poor board layout can disrupt the performance of a DC-DC converter and surrounding circuitry by contributing to EMI, ground bounce, and resistive voltage loss in the traces. These can send erroneous signals to the DC-DC converter resulting in poor regulation or instability. Good layout can be implemented by following a few simple design rules.

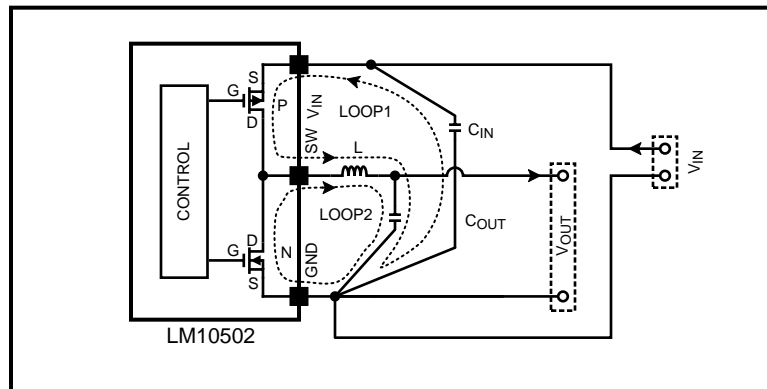


Figure 25. Schematic of LM10502 Highlighting Layout Sensitive Nodes

1. Minimize area of switched current loops. In a buck regulator there are two loops where currents are switched rapidly. The first loop starts from the C_{IN} input capacitor, to the regulator VIN pin, to the regulator SW pin, to the inductor then out to the output capacitor C_{OUT} and load. The second loop starts from the output capacitor ground, to the regulator GND pins, to the inductor and then out to C_{OUT} and the load (see figure above). To minimize both loop areas the input capacitor should be placed as close as possible to the VIN pin. Grounding for both the input and output capacitors should consist of a small localized top side plane that connects to GND. The inductor should be placed as close as possible to the SW pin and output capacitor.
2. Minimize the copper area of the switch node. The SW pins should be directly connected with a trace that runs on top side directly to the inductor. To minimize IR losses this trace should be as short as possible and with a sufficient width. However, a trace that is wider than 100 mils will increase the copper area and cause too much capacitive loading on the SW pin. The inductors should be placed as close as possible to the SW pins to further minimize the copper area of the switch node.
3. Have a single point ground for all device analog grounds. The ground connections for the feedback components should be connected together then routed to the GND pin of the device. This prevents any switched or load currents from flowing in the analog ground plane. If not properly handled, poor grounding can result in degraded load regulation or erratic switching behavior.
4. Minimize trace length to the FB pin. The feedback trace should be routed away from the SW pin and inductor to avoid contaminating the feedback signal with switch noise.
5. Make input and output bus connections as wide as possible. This reduces any voltage drops on the input or output of the converter and can improve efficiency. If voltage accuracy at the load is important make sure feedback voltage sense is made at the load. Doing so will correct for voltage drops at the load and provide the best output accuracy.



These devices have limited built-in ESD protection. The leads should be shorted together or the device placed in conductive foam during storage or handling to prevent electrostatic damage to the MOS gates.

PACKAGING INFORMATION

Orderable Device	Status (1)	Package Type	Package Drawing	Pins	Package Qty	Eco Plan (2)	Lead/Ball Finish	MSL Peak Temp (3)	Op Temp (°C)	Top-Side Markings (4)	Samples
LM10502TLE/NOPB	PREVIEW	DSBGA	YZR	25		Green (RoHS & no Sb/Br)	SNAGCU	Level-1-260C-UNLIM	-30 to 125		
LM10502TLX/NOPB	PREVIEW	DSBGA	YZR	25		Green (RoHS & no Sb/Br)	SNAGCU	Level-1-260C-UNLIM	-30 to 125		

(1) The marketing status values are defined as follows:

ACTIVE: Product device recommended for new designs.

LIFEBUY: TI has announced that the device will be discontinued, and a lifetime-buy period is in effect.

NRND: Not recommended for new designs. Device is in production to support existing customers, but TI does not recommend using this part in a new design.

PREVIEW: Device has been announced but is not in production. Samples may or may not be available.

OBSOLETE: TI has discontinued the production of the device.

(2) Eco Plan - The planned eco-friendly classification: Pb-Free (RoHS), Pb-Free (RoHS Exempt), or Green (RoHS & no Sb/Br) - please check <http://www.ti.com/productcontent> for the latest availability information and additional product content details.

TBD: The Pb-Free/Green conversion plan has not been defined.

Pb-Free (RoHS): TI's terms "Lead-Free" or "Pb-Free" mean semiconductor products that are compatible with the current RoHS requirements for all 6 substances, including the requirement that lead not exceed 0.1% by weight in homogeneous materials. Where designed to be soldered at high temperatures, TI Pb-Free products are suitable for use in specified lead-free processes.

Pb-Free (RoHS Exempt): This component has a RoHS exemption for either 1) lead-based flip-chip solder bumps used between the die and package, or 2) lead-based die adhesive used between the die and leadframe. The component is otherwise considered Pb-Free (RoHS compatible) as defined above.

Green (RoHS & no Sb/Br): TI defines "Green" to mean Pb-Free (RoHS compatible), and free of Bromine (Br) and Antimony (Sb) based flame retardants (Br or Sb do not exceed 0.1% by weight in homogeneous material)

(3) MSL, Peak Temp. -- The Moisture Sensitivity Level rating according to the JEDEC industry standard classifications, and peak solder temperature.

(4) Only one of markings shown within the brackets will appear on the physical device.

Important Information and Disclaimer: The information provided on this page represents TI's knowledge and belief as of the date that it is provided. TI bases its knowledge and belief on information provided by third parties, and makes no representation or warranty as to the accuracy of such information. Efforts are underway to better integrate information from third parties. TI has taken and continues to take reasonable steps to provide representative and accurate information but may not have conducted destructive testing or chemical analysis on incoming materials and chemicals. TI and TI suppliers consider certain information to be proprietary, and thus CAS numbers and other limited information may not be available for release.

In no event shall TI's liability arising out of such information exceed the total purchase price of the TI part(s) at issue in this document sold by TI to Customer on an annual basis.

TAPE AND REEL INFORMATION


*All dimensions are nominal

Device	Package Type	Package Drawing	Pins	SPQ	Reel Diameter (mm)	Reel Width W1 (mm)	A0 (mm)	B0 (mm)	K0 (mm)	P1 (mm)	W (mm)	Pin1 Quadrant
LM10502TLE/NOPB	DSBGA	YZR	25	0	178.0	8.4	2.69	2.69	0.76	4.0	8.0	Q1
LM10502TLX/NOPB	DSBGA	YZR	25	0	178.0	8.4	2.69	2.69	0.76	4.0	8.0	Q1

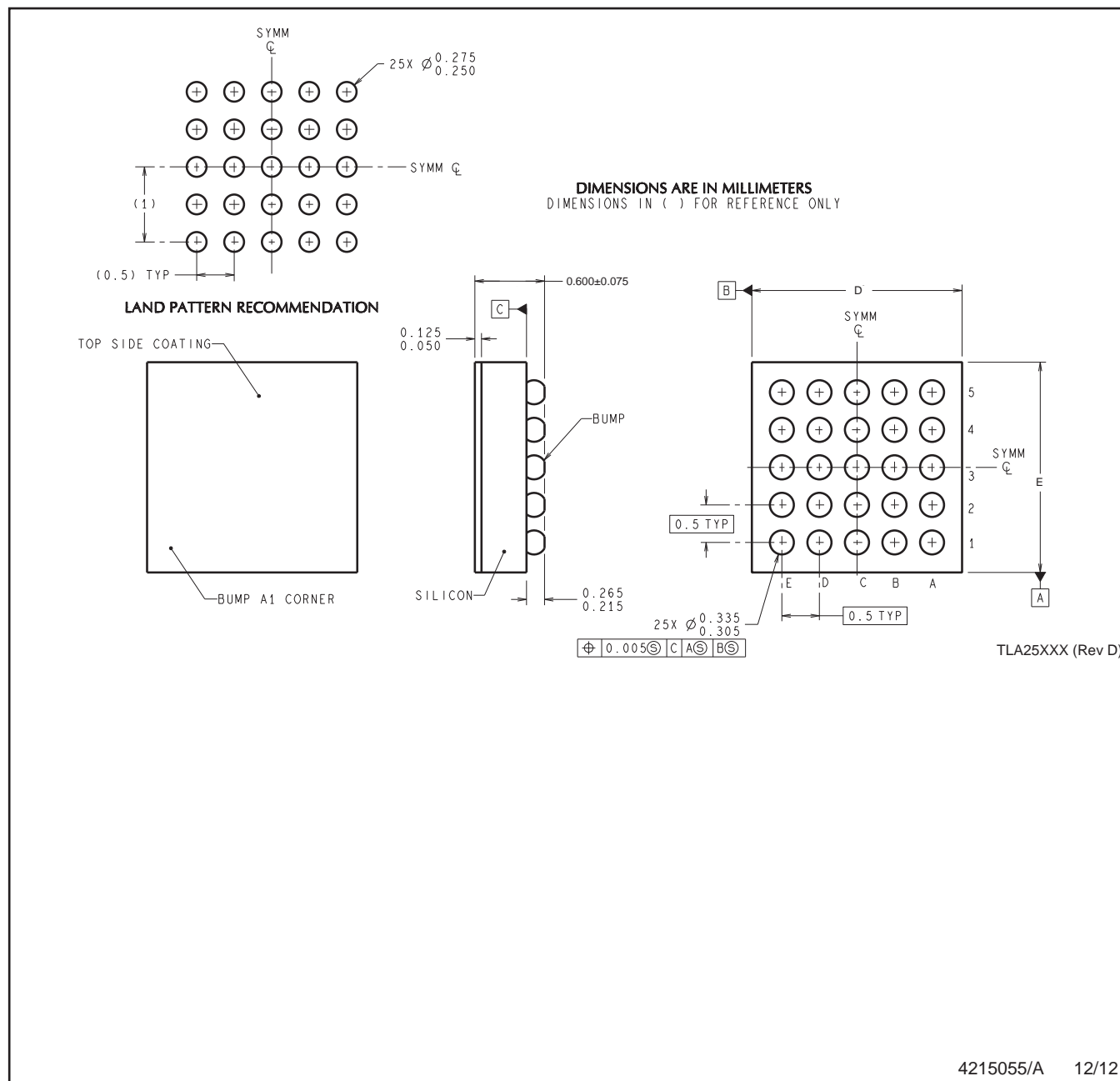
TAPE AND REEL BOX DIMENSIONS



*All dimensions are nominal

Device	Package Type	Package Drawing	Pins	SPQ	Length (mm)	Width (mm)	Height (mm)
LM10502TLE/NOPB	DSBGA	YZR	25	0	203.0	190.0	41.0
LM10502TLX/NOPB	DSBGA	YZR	25	0	203.0	190.0	41.0

YZR0025



NOTES: A. All linear dimensions are in millimeters. Dimensioning and tolerancing per ASME Y14.5M-1994.
B. This drawing is subject to change without notice.

IMPORTANT NOTICE

Texas Instruments Incorporated and its subsidiaries (TI) reserve the right to make corrections, enhancements, improvements and other changes to its semiconductor products and services per JESD46, latest issue, and to discontinue any product or service per JESD48, latest issue. Buyers should obtain the latest relevant information before placing orders and should verify that such information is current and complete. All semiconductor products (also referred to herein as "components") are sold subject to TI's terms and conditions of sale supplied at the time of order acknowledgment.

TI warrants performance of its components to the specifications applicable at the time of sale, in accordance with the warranty in TI's terms and conditions of sale of semiconductor products. Testing and other quality control techniques are used to the extent TI deems necessary to support this warranty. Except where mandated by applicable law, testing of all parameters of each component is not necessarily performed.

TI assumes no liability for applications assistance or the design of Buyers' products. Buyers are responsible for their products and applications using TI components. To minimize the risks associated with Buyers' products and applications, Buyers should provide adequate design and operating safeguards.

TI does not warrant or represent that any license, either express or implied, is granted under any patent right, copyright, mask work right, or other intellectual property right relating to any combination, machine, or process in which TI components or services are used. Information published by TI regarding third-party products or services does not constitute a license to use such products or services or a warranty or endorsement thereof. Use of such information may require a license from a third party under the patents or other intellectual property of the third party, or a license from TI under the patents or other intellectual property of TI.

Reproduction of significant portions of TI information in TI data books or data sheets is permissible only if reproduction is without alteration and is accompanied by all associated warranties, conditions, limitations, and notices. TI is not responsible or liable for such altered documentation. Information of third parties may be subject to additional restrictions.

Resale of TI components or services with statements different from or beyond the parameters stated by TI for that component or service voids all express and any implied warranties for the associated TI component or service and is an unfair and deceptive business practice. TI is not responsible or liable for any such statements.

Buyer acknowledges and agrees that it is solely responsible for compliance with all legal, regulatory and safety-related requirements concerning its products, and any use of TI components in its applications, notwithstanding any applications-related information or support that may be provided by TI. Buyer represents and agrees that it has all the necessary expertise to create and implement safeguards which anticipate dangerous consequences of failures, monitor failures and their consequences, lessen the likelihood of failures that might cause harm and take appropriate remedial actions. Buyer will fully indemnify TI and its representatives against any damages arising out of the use of any TI components in safety-critical applications.

In some cases, TI components may be promoted specifically to facilitate safety-related applications. With such components, TI's goal is to help enable customers to design and create their own end-product solutions that meet applicable functional safety standards and requirements. Nonetheless, such components are subject to these terms.

No TI components are authorized for use in FDA Class III (or similar life-critical medical equipment) unless authorized officers of the parties have executed a special agreement specifically governing such use.

Only those TI components which TI has specifically designated as military grade or "enhanced plastic" are designed and intended for use in military/aerospace applications or environments. Buyer acknowledges and agrees that any military or aerospace use of TI components which have **not** been so designated is solely at the Buyer's risk, and that Buyer is solely responsible for compliance with all legal and regulatory requirements in connection with such use.

TI has specifically designated certain components as meeting ISO/TS16949 requirements, mainly for automotive use. In any case of use of non-designated products, TI will not be responsible for any failure to meet ISO/TS16949.

Products

Audio	www.ti.com/audio
Amplifiers	amplifier.ti.com
Data Converters	dataconverter.ti.com
DLP® Products	www.dlp.com
DSP	dsp.ti.com
Clocks and Timers	www.ti.com/clocks
Interface	interface.ti.com
Logic	logic.ti.com
Power Mgmt	power.ti.com
Microcontrollers	microcontroller.ti.com
RFID	www.ti-rfid.com
OMAP Applications Processors	www.ti.com/omap
Wireless Connectivity	www.ti.com/wirelessconnectivity

Applications

Automotive and Transportation	www.ti.com/automotive
Communications and Telecom	www.ti.com/communications
Computers and Peripherals	www.ti.com/computers
Consumer Electronics	www.ti.com/consumer-apps
Energy and Lighting	www.ti.com/energy
Industrial	www.ti.com/industrial
Medical	www.ti.com/medical
Security	www.ti.com/security
Space, Avionics and Defense	www.ti.com/space-avionics-defense
Video and Imaging	www.ti.com/video

TI E2E Community

e2e.ti.com