



# LM386 Low Voltage Audio Power Amplifier

## General Description

The LM386 is a power amplifier designed for use in low voltage consumer applications. The gain is internally set to 20 to keep external part count low, but the addition of an external resistor and capacitor between pins 1 and 8 will increase the gain to any value up to 200.

The inputs are ground referenced while the output is automatically biased to one half the supply voltage. The quiescent power drain is only 24 milliwatts when operating from a 6 volt supply, making the LM386 ideal for battery operation.

## Features

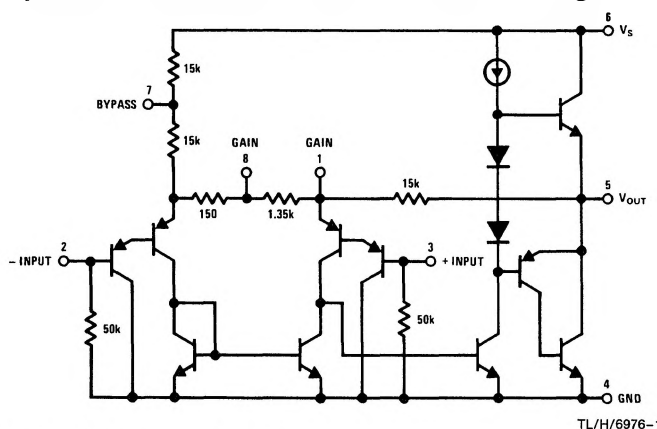
- Battery operation
- Minimum external parts
- Wide supply voltage range 4V–12V or 5V–18V
- Low quiescent current drain 4 mA

- Voltage gains from 20 to 200
- Ground referenced input
- Self-centering output quiescent voltage
- Low distortion
- Eight pin dual-in-line package

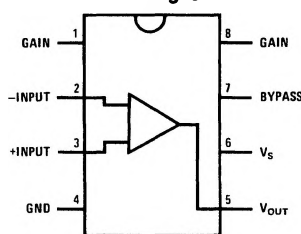
## Applications

- AM-FM radio amplifiers
- Portable tape player amplifiers
- Intercoms
- TV sound systems
- Line drivers
- Ultrasonic drivers
- Small servo drivers
- Power converters

## Equivalent Schematic and Connection Diagrams



Dual-In-Line and Small Outline Packages

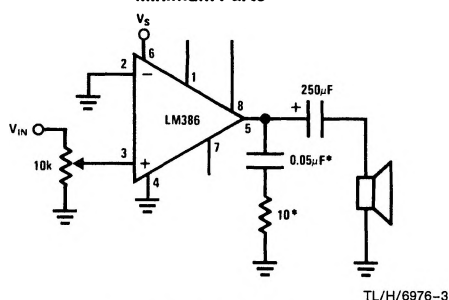


Top View

Order Number LM386M-1,  
LM386N-1, LM386N-3 or LM386N-4  
See NS Package Number  
M08A or N08E

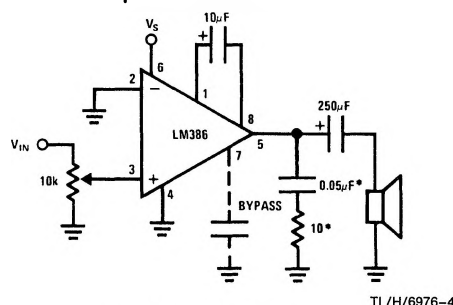
## Typical Applications

Amplifier with Gain = 20  
Minimum Parts



\*Required for LM386N-4 only.

Amplifier with Gain = 200



\*Required for LM386N-4 only.

## Absolute Maximum Ratings

If Military/Aerospace specified devices are required, contact the National Semiconductor Sales Office/Distributors for availability and specifications.

|   |                                   |
|---|-----------------------------------|
| Supply Voltage (LM386N-1, -3, LM386M-1) | 15V                               |
| Supply Voltage (LM386N-4)               | 22V                               |
| Package Dissipation (Note 1) (LM386N-4) | 1.25W                             |
| Input Voltage                           | $\pm 0.4V$                        |
| Storage Temperature                     | $-65^{\circ}C$ to $+150^{\circ}C$ |
| Operating Temperature                   | $0^{\circ}C$ to $+70^{\circ}C$    |

|                       |                 |
|-----------------------|-----------------|
| Junction Temperature  | $+150^{\circ}C$ |
| Soldering Information |                 |
| Dual-In-Line Package  |                 |
| Soldering (10 sec)    | $+260^{\circ}C$ |
| Small Outline Package |                 |
| Vapor Phase (60 sec)  | $+215^{\circ}C$ |
| Infrared (15 sec)     | $+220^{\circ}C$ |

See AN-450 "Surface Mounting Methods and Their Effect on Product Reliability" for other methods of soldering surface mount devices.

## Electrical Characteristics $T_A = 25^{\circ}C$

| Parameter                           | Conditions  | Min | Typ      | Max | Units      |
|-------------------------------------|---|-----|----------|-----|------------|
| Operating Supply Voltage ( $V_S$ )  |   |     |          |     |            |
| LM386N-1, -3, LM386M-1              |   | 4   |          | 12  | V          |
| LM386N-4                            |   | 5   |          | 18  | V          |
| Quiescent Current ( $I_Q$ )         | $V_S = 6V, V_{IN} = 0$  |     | 4        | 8   | mA         |
| Output Power ( $P_{OUT}$ )          |   |     |          |     |            |
| LM386N-1, LM386M-1                  | $V_S = 6V, R_L = 8\Omega, THD = 10\%$   | 250 | 325      |     | mW         |
| LM386N-3                            | $V_S = 9V, R_L = 8\Omega, THD = 10\%$   | 500 | 700      |     | mW         |
| LM386N-4                            | $V_S = 16V, R_L = 32\Omega, THD = 10\%$   | 700 | 1000     |     | mW         |
| Voltage Gain ( $A_V$ )              | $V_S = 6V, f = 1\text{ kHz}$<br>$10\ \mu F$ from Pin 1 to 8                                   |     | 26<br>46 |     | dB<br>dB   |
| Bandwidth (BW)                      | $V_S = 6V$ , Pins 1 and 8 Open  |     | 300      |     | kHz        |
| Total Harmonic Distortion (THD)     | $V_S = 6V, R_L = 8\Omega, P_{OUT} = 125\text{ mW}$<br>$f = 1\text{ kHz}$ , Pins 1 and 8 Open  |     | 0.2      |     | %          |
| Power Supply Rejection Ratio (PSRR) | $V_S = 6V, f = 1\text{ kHz}, C_{BYPASS} = 10\ \mu F$<br>Pins 1 and 8 Open, Referred to Output |     | 50       |     | dB         |
| Input Resistance ( $R_{IN}$ )       |   |     | 50       |     | k $\Omega$ |
| Input Bias Current ( $I_{BIAS}$ )   | $V_S = 6V$ , Pins 2 and 3 Open  |     | 250      |     | nA         |

**Note 1:** For operation in ambient temperatures above  $25^{\circ}C$ , the device must be derated based on a  $150^{\circ}C$  maximum junction temperature and 1) a thermal resistance of  $80^{\circ}C/W$  junction to ambient for the dual-in-line package and 2) a thermal resistance of  $170^{\circ}C/W$  for the small outline package.

## Application Hints

### GAIN CONTROL

To make the LM386 a more versatile amplifier, two pins (1 and 8) are provided for gain control. With pins 1 and 8 open the  $1.35\text{ k}\Omega$  resistor sets the gain at 20 (26 dB). If a capacitor is put from pin 1 to 8, bypassing the  $1.35\text{ k}\Omega$  resistor, the gain will go up to 200 (46 dB). If a resistor is placed in series with the capacitor, the gain can be set to any value from 20 to 200. Gain control can also be done by capacitively coupling a resistor (or FET) from pin 1 to ground.

Additional external components can be placed in parallel with the internal feedback resistors to tailor the gain and frequency response for individual applications. For example, we can compensate poor speaker bass response by frequency shaping the feedback path. This is done with a series RC from pin 1 to 5 (paralleling the internal  $15\text{ k}\Omega$  resistor). For 6 dB effective bass boost:  $R \approx 15\text{ k}\Omega$ , the lowest value for good stable operation is  $R = 10\text{ k}\Omega$  if pin 8 is open. If pins 1 and 8 are bypassed then  $R$  as low as  $2\text{ k}\Omega$  can be used. This restriction is because the amplifier is only compensated for closed-loop gains greater than 9.

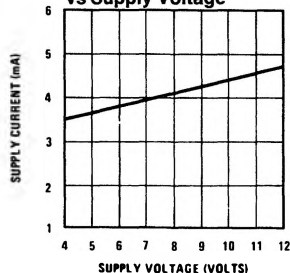
### INPUT BIASING

The schematic shows that both inputs are biased to ground with a  $50\text{ k}\Omega$  resistor. The base current of the input transistors is about  $250\text{ nA}$ , so the inputs are at about  $12.5\text{ mV}$  when left open. If the dc source resistance driving the LM386 is higher than  $250\text{ k}\Omega$  it will contribute very little additional offset (about  $2.5\text{ mV}$  at the input,  $50\text{ mV}$  at the output). If the dc source resistance is less than  $10\text{ k}\Omega$ , then shorting the unused input to ground will keep the offset low (about  $2.5\text{ mV}$  at the input,  $50\text{ mV}$  at the output). For dc source resistances between these values we can eliminate excess offset by putting a resistor from the unused input to ground, equal in value to the dc source resistance. Of course all offset problems are eliminated if the input is capacitively coupled.

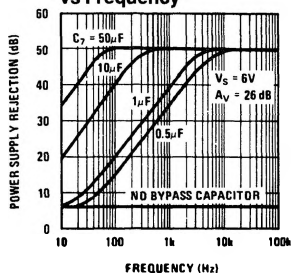
When using the LM386 with higher gains (bypassing the  $1.35\text{ k}\Omega$  resistor between pins 1 and 8) it is necessary to bypass the unused input, preventing degradation of gain and possible instabilities. This is done with a  $0.1\ \mu F$  capacitor or a short to ground depending on the dc source resistance on the driven input.

# Typical Performance Characteristics

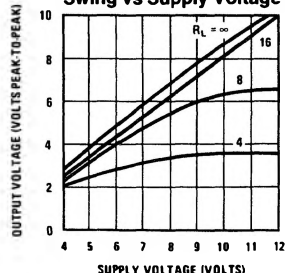
Quiescent Supply Current  
vs Supply Voltage



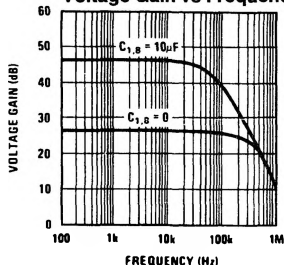
Power Supply Rejection Ratio  
(Referred to the Output)  
vs Frequency



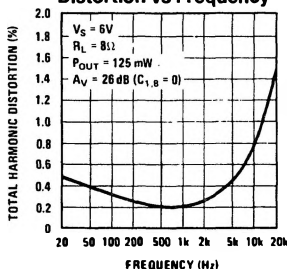
Peak-to-Peak Output Voltage  
Swing vs Supply Voltage



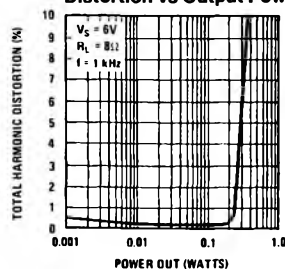
Voltage Gain vs Frequency



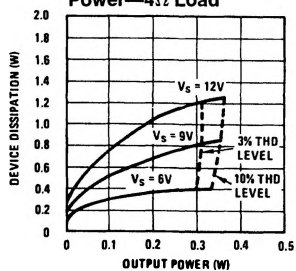
Distortion vs Frequency



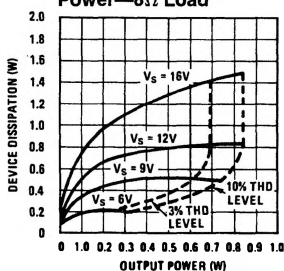
Distortion vs Output Power



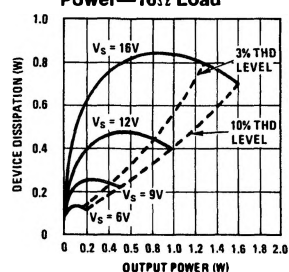
Device Dissipation vs Output  
Power—4Ω Load



Device Dissipation vs Output  
Power—8Ω Load



Device Dissipation vs Output  
Power—16Ω Load

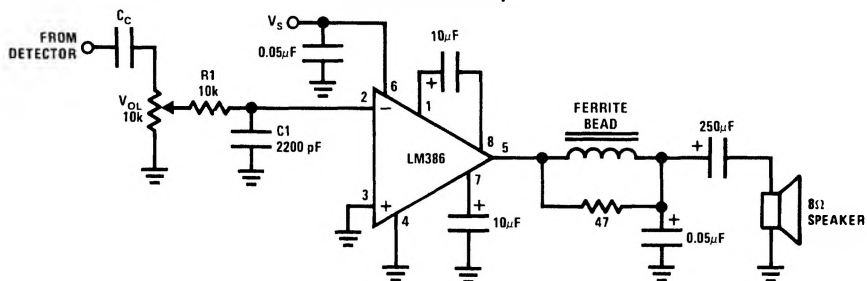


TL/H/6976-5



## Typical Applications (Continued)

### AM Radio Power Amplifier



TL/H/6976-11

**Note 1:** Twist supply lead and supply ground very tightly.

**Note 2:** Twist speaker lead and ground very tightly.

**Note 3:** Ferrite bead is Ferroxcube K5-001-001/3B with 3 turns of wire.

**Note 4:**  $R_1C_1$  band limits input signals.

**Note 5:** All components must be spaced very close to IC.